

SELECT THE AREA YOU WOULD LIKE TO VIEW FROM THE DROP DOWN BOX



East of England - Hertsmere



Sport England Local Sport Profile for Hertsmere

Understanding demographics within Hertsmere

Demographic characteristic count (000s)

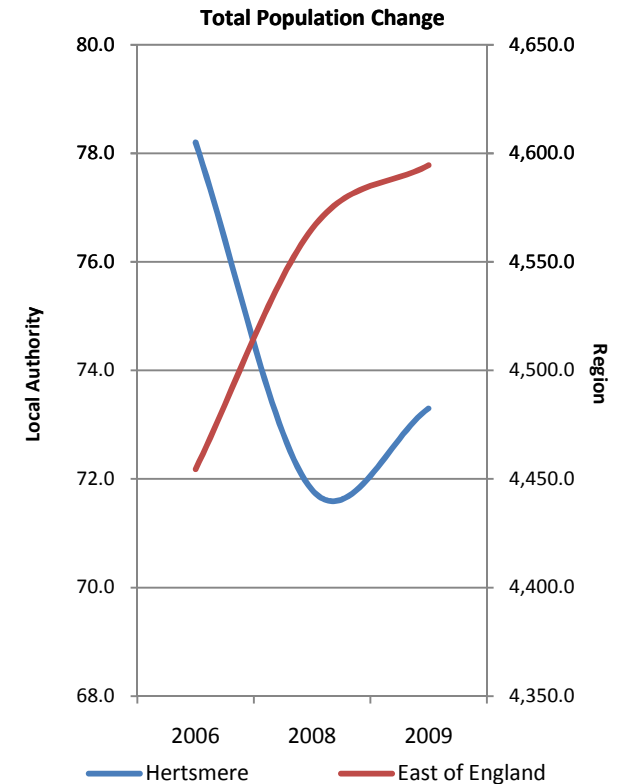
| Indicator | Hertsmere | | | East of England | | | England | | |
|-----------------------------|-------------|-------------|-------------|-----------------|----------------|----------------|-----------------|-----------------|-----------------|
| | 2006 | 2008 | 2009 | 2006 | 2008 | 2009 | 2006 | 2008 | 2009 |
| Male | 36.7 | 35.1 | 34.5 | 2,167.6 | 2,229.3 | 2,250.6 | 19,667.9 | 20,056.9 | 20,237.7 |
| Female | 41.5 | 36.8 | 38.8 | 2,286.6 | 2,336.4 | 2,344.1 | 20,743.9 | 21,028.4 | 21,178.5 |
| Total | 78.2 | 71.8 | 73.3 | 4,454.5 | 4,565.3 | 4,594.6 | 40,411.0 | 41,083.8 | 41,416.8 |
| 16 to 19 | 4.7 | 6.4 | 5.2 | 277.1 | 284.8 | 282.4 | 2,618.5 | 2,647.5 | 2,626.5 |
| 20 to 24 | 3.0 | 7.4 | 2.0 | 316.5 | 340.7 | 349.7 | 3,284.2 | 3,449.5 | 3,508.1 |
| 25 to 34 | 9.8 | 10.9 | 15.0 | 688.3 | 689.8 | 698.0 | 6,637.7 | 6,630.4 | 6,727.6 |
| 35 to 49 | 21.4 | 22.1 | 21.8 | 1,238.4 | 1,259.5 | 1,255.5 | 11,185.9 | 11,283.4 | 11,259.8 |
| 50 to 64 | 22.1 | 14.3 | 17.8 | 1,034.9 | 1,059.4 | 1,062.1 | 8,967.7 | 9,166.7 | 9,246.4 |
| 65+ | 17.2 | 10.8 | 11.5 | 899.4 | 930.9 | 946.4 | 7,714.2 | 7,904.1 | 8,040.8 |
| White | 69.8 | 63.0 | 64.1 | 4,194.1 | 4,259.6 | 4,284.2 | 36,335.5 | 36,599.9 | 36,817.5 |
| Non-White | 8.4 | 8.9 | 9.1 | 257.1 | 302.3 | 306.7 | 4,046.8 | 4,457.6 | 4,562.1 |
| Both DDA & worklimiting | 6.1 | 5.8 | 4.4 | 326.4 | 349.3 | 337.1 | 3,459.3 | 3,460.7 | 3,437.1 |
| DDA only disabled | 3.6 | 2.0 | 3.2 | 157.6 | 188.3 | 196.4 | 1,568.5 | 1,649.4 | 1,692.2 |
| Work-limiting only disabled | 1.2 | 1.0 | 1.8 | 110.9 | 117.2 | 114.8 | 1,027.5 | 1,014.2 | 1,025.3 |
| Not disabled | 50.1 | 52.2 | 52.4 | 2,957.0 | 2,978.0 | 2,995.8 | 26,628.7 | 27,043.9 | 27,201.4 |
| Total | 78.2 | 71.8 | 73.3 | 4,454.5 | 4,565.3 | 4,594.6 | 40,411.0 | 41,083.8 | 41,416.8 |

Source: Annual Population Survey Year: 2006, 2008 & 2009

Measure: Number of adult population broken down by gender, age, ethnicity and disability

[For more information click here](#)

NB: * signifies that the entry has been suppressed due to confidentiality or because of sample size and this is the case throughout the spreadsheet



Demographic characteristic proportions

| Indicator | Hertsmere | | | East of England | | | England | | |
|-----------------------------|-------------|-------------|-------------|-----------------|-------------|-------------|-------------|-------------|-------------|
| | 2006 | 2008 | 2009 | 2006 | 2008 | 2009 | 2006 | 2008 | 2009 |
| Male | 46.9% | 48.9% | 47.1% | 48.7% | 48.8% | 49.0% | 48.7% | 48.8% | 48.9% |
| Female | 53.1% | 51.3% | 52.9% | 51.3% | 51.2% | 51.0% | 51.3% | 51.2% | 51.1% |
| 16 to 19 | 6.0% | 8.9% | 7.1% | 6.2% | 6.2% | 6.1% | 6.5% | 6.4% | 6.3% |
| 20 to 24 | 3.8% | 10.3% | 2.7% | 7.1% | 7.5% | 7.6% | 8.1% | 8.4% | 8.5% |
| 25 to 34 | 12.5% | 15.2% | 20.5% | 15.5% | 15.1% | 15.2% | 16.4% | 16.1% | 16.2% |
| 35 to 49 | 27.4% | 30.8% | 29.7% | 27.8% | 27.6% | 27.3% | 27.7% | 27.5% | 27.2% |
| 50 to 64 | 28.3% | 19.9% | 24.3% | 23.2% | 23.2% | 23.1% | 22.2% | 22.3% | 22.3% |
| 65+ | 22.0% | 15.0% | 15.7% | 20.2% | 20.4% | 20.6% | 19.1% | 19.2% | 19.4% |
| White | 89.3% | 87.7% | 87.4% | 94.2% | 93.3% | 93.2% | 89.9% | 89.1% | 88.9% |
| Non-White | 10.7% | 12.4% | 12.4% | 5.8% | 6.6% | 6.7% | 10.0% | 10.9% | 11.0% |
| Both DDA & worklimiting | 7.8% | 8.1% | 6.0% | 7.3% | 7.7% | 7.3% | 8.6% | 8.4% | 8.3% |
| DDA only disabled | 4.6% | 2.8% | 4.4% | 3.5% | 4.1% | 4.3% | 3.9% | 4.0% | 4.1% |
| Work-limiting only disabled | 1.5% | 1.4% | 2.5% | 2.5% | 2.6% | 2.5% | 2.5% | 2.5% | 2.5% |
| Not disabled | 64.1% | 72.7% | 71.5% | 66.4% | 65.2% | 65.2% | 65.9% | 65.8% | 65.7% |
| Total | 100% | 100% | 100% | 100% | 100% | 100% | 100% | 100% | 100% |

Source: Annual Population Survey Year: 2006, 2008 & 2009

Measure: Proportion of adult population broken down by gender, age, ethnicity and disability

Unemployment as a proportion of economically active (000s)

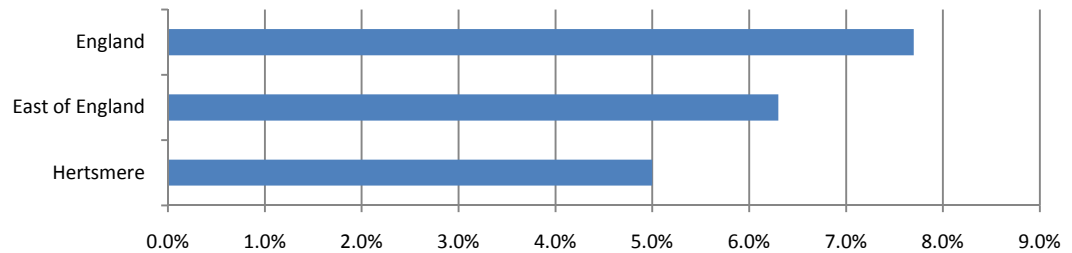
| Geography | Unemployed | Economic-ally Active | Rate |
|-----------------|------------|----------------------|------|
| Hertsmere | 2.6 | 51.6 | 5.0% |
| East of England | 188.1 | 2,970.9 | 6.3% |
| England | 2,029.0 | 26,305.2 | 7.7% |

Source: Annual Population Survey Year: 2009

Measure: Number and proportion of adult population that are unemployed and number that are economically active.

[For more information click here](#)

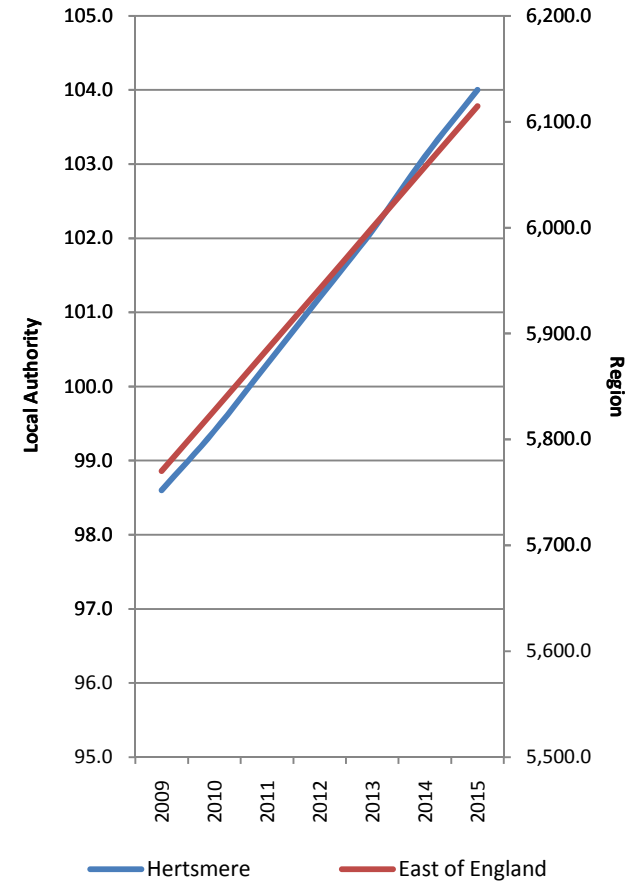
Unemployment Rate as a proportion of Economically Active Pop



Population projections by local authority area (2009-2015) (000s)

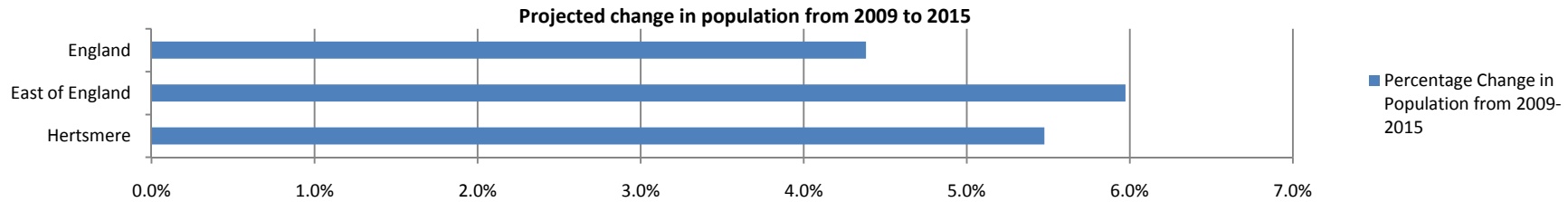
| Indicator | Hertsmere | | | | | | | Chg 09 - 15 | % Chg |
|------------------------|-----------------|-----------------|-----------------|-----------------|-----------------|-----------------|-----------------|----------------|-------------|
| | 2009 | 2010 | 2011 | 2012 | 2013 | 2014 | 2015 | | |
| Male | 47.9 | 48.4 | 48.9 | 49.4 | 49.9 | 50.4 | 50.9 | 3 | 6.3% |
| Female | 50.7 | 51 | 51.4 | 51.8 | 52.2 | 52.7 | 53.1 | 2.4 | 4.7% |
| 0-4 | 6.7 | 6.8 | 6.9 | 7 | 6.9 | 6.9 | 6.9 | 0.2 | 3.0% |
| 5-9 | 5.9 | 6.1 | 6.3 | 6.6 | 6.8 | 7 | 7.2 | 1.3 | 22.0% |
| 10-14 | 6.2 | 6 | 6 | 5.9 | 5.9 | 6 | 6.2 | 0 | 0.0% |
| 15-19 | 5.9 | 5.9 | 5.8 | 5.8 | 5.7 | 5.7 | 5.5 | -0.4 | -6.8% |
| 20-24 | 5.4 | 5.4 | 5.4 | 5.3 | 5.2 | 5.2 | 5.1 | -0.3 | -5.6% |
| 25-29 | 6.3 | 6.4 | 6.5 | 6.7 | 6.9 | 7.1 | 7.1 | 0.8 | 12.7% |
| 30-34 | 6.4 | 6.6 | 6.8 | 6.9 | 6.9 | 7 | 7.1 | 0.7 | 10.9% |
| 35-39 | 6.9 | 6.9 | 6.8 | 6.8 | 6.9 | 6.9 | 7.1 | 0.2 | 2.9% |
| 40-44 | 7.6 | 7.4 | 7.3 | 7.2 | 7.1 | 7.1 | 7.1 | -0.5 | -6.6% |
| 45-49 | 7.6 | 7.8 | 7.9 | 7.8 | 7.7 | 7.6 | 7.4 | -0.2 | -2.6% |
| 50-54 | 6.4 | 6.4 | 6.7 | 6.9 | 7.3 | 7.4 | 7.6 | 1.2 | 18.8% |
| 55-59 | 5.8 | 5.9 | 5.8 | 5.9 | 5.9 | 6.1 | 6.1 | 0.3 | 5.2% |
| 60-64 | 5.7 | 5.7 | 5.8 | 5.6 | 5.5 | 5.4 | 5.5 | -0.2 | -3.5% |
| 65-69 | 3.9 | 4.1 | 4.3 | 4.8 | 5 | 5.1 | 5.2 | 1.3 | 33.3% |
| 70-74 | 3.6 | 3.6 | 3.5 | 3.4 | 3.5 | 3.7 | 3.8 | 0.2 | 5.6% |
| 75-79 | 3 | 3 | 3.1 | 3.1 | 3.2 | 3.2 | 3.2 | 0.2 | 6.7% |
| 80-84 | 2.6 | 2.6 | 2.6 | 2.5 | 2.5 | 2.6 | 2.6 | 0 | 0.0% |
| 85-89 | 1.8 | 1.9 | 1.9 | 1.9 | 1.9 | 1.9 | 1.9 | 0.1 | 5.6% |
| 90+ | 0.9 | 0.9 | 1 | 1.1 | 1.2 | 1.3 | 1.3 | 0.4 | 44.4% |
| Hertsmere | 98.6 | 99.4 | 100.3 | 101.2 | 102.1 | 103.1 | 104.0 | 5.4 | 5.5% |
| East of England | 5,770.1 | 5,827.3 | 5,884.7 | 5,942.2 | 5,999.9 | 6,057.4 | 6,114.8 | 344.7 | 6.0% |
| England | 51,817.1 | 52,196.7 | 52,577.1 | 52,953.9 | 53,332.0 | 53,710.0 | 54,087.8 | 2,270.7 | 4.4% |

Population projections (000s) 2009 to 2015



Source: Office of National Statistics, Sub National Population Projections: 2009-2015 Measure: Projected number of population and forecasted percentage change in time period.

[For more information click here](#)



Obesity levels in adults and children (000s)

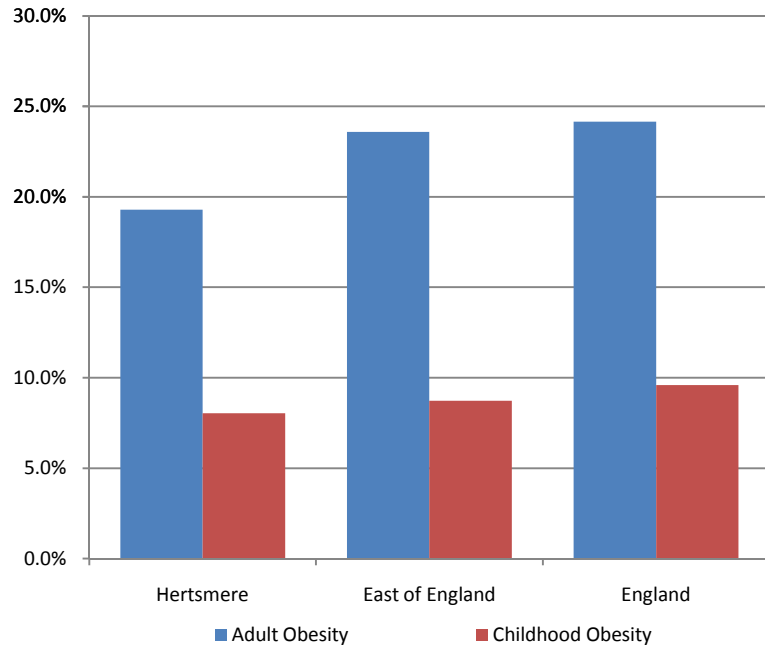
| Geography | Adult Obesity | | Childhood Obesity | |
|-----------------|---------------|-------|-------------------|------|
| | Number | Rate | Number | Rate |
| Hertsmere | 14.1 | 19.3% | 0.1 | 8.0% |
| East of England | 1,083.4 | 23.6% | 4.8 | 8.7% |
| England | 10,005.6 | 24.2% | 48.6 | 9.6% |

Source: Department of Health: Year: 2006-2008 (Adults) 2008/09 (Children)

Measure: Number of people & proportion of the adult population and child population that are obese

[For more information click here](#)

Proportion of the Adult & Child population that are obese



Life expectancy by gender

| Geography | Life Expectancy | |
|-----------------|-----------------|--------|
| | Male | Female |
| Hertsmere | 78.8 | 82.8 |
| East of England | 78.9 | 82.8 |
| England | 77.9 | 82.0 |

Source: Department of Health: Year: 2006-2008: Measure: Life expectancy in years

[For more information click here](#)

Deprivation levels as measured by the Index of Multiple Deprivation (IMD)

| Geography | Deprivation 2007 |
|-------------------------------------|------------------|
| Score in Hertsmere | 12.86 |
| Rank in East of England (out of 52) | 29 |
| Rank in England (out of 353) | 247 |

Source: Department for Communities and Local Government Year: 2007

Measure: Index of multiple deprivation and rank in region and nation

[For more information click here](#)

Physical area (sq km)

| Geography | Total Area in sq km | Proportion |
|-----------------|---------------------|------------|
| Hertsmere | 101.2 | - |
| East of England | 19,109.3 | 0.5% |
| England | 130,278.5 | 0.1% |

Source: Office of National Statistics Year: 2007

Measure: Area measurements for local authority areas by sq km

[For more information click here](#)

Sport and Active Recreation Participation in Hertsmere

NI8 Sport & Active Recreation Participation by year, duration and gender

| Indicator | Year | Hertsmere | | | East of England | | | England | | |
|--------------------------|---------|-----------|-------|--------|-----------------|-------|--------|---------|-------|--------|
| | | All | Male | Female | All | Male | Female | All | Male | Female |
| 0 days / 0x30 | 2005/06 | 48.9% | 46.4% | 51.1% | 49.0% | 45.0% | 52.8% | 50.0% | 45.1% | 54.6% |
| | 2007/09 | 44.8% | 41.6% | 47.7% | 46.9% | 42.1% | 51.5% | 47.8% | 42.4% | 53.0% |
| 1-3 days | 2005/06 | 10.2% | 8.5% | 11.8% | 9.2% | 9.8% | 8.7% | 8.8% | 9.5% | 8.1% |
| | 2007/09 | 10.2% | 13.1% | 7.6% | 9.6% | 10.6% | 8.6% | 9.0% | 9.8% | 8.3% |
| 4-7 days / 1x30 | 2005/06 | 10.9% | 12.5% | 9.5% | 12.5% | 13.2% | 11.8% | 12.0% | 12.8% | 11.3% |
| | 2007/09 | 11.9% | 11.2% | 12.5% | 13.2% | 13.9% | 12.6% | 12.7% | 13.5% | 11.9% |
| 8-11 days / 2x30 | 2005/06 | 8.7% | 10.8% | 6.9% | 8.4% | 9.1% | 7.7% | 8.0% | 8.7% | 7.3% |
| | 2007/09 | 13.1% | 14.3% | 11.9% | 8.9% | 9.7% | 8.2% | 8.7% | 9.5% | 7.9% |
| 12-19 days / 3x30 | 2005/06 | 10.1% | 12.3% | 8.2% | 9.5% | 10.6% | 8.4% | 9.6% | 10.9% | 8.4% |
| | 2007/09 | 9.5% | 9.1% | 9.9% | 10.3% | 11.7% | 9.0% | 10.7% | 12.2% | 9.3% |
| 12+ days / 3x30 - NI8 | 2005/06 | 21.0% | 21.6% | 20.4% | 20.8% | 22.8% | 18.9% | 21.3% | 24.0% | 18.7% |
| | 2007/09 | 20.1% | 19.8% | 20.3% | 21.4% | 23.7% | 19.2% | 21.8% | 24.8% | 18.9% |
| 20+ days / 5x30 | 2005/06 | 10.7% | 9.3% | 12.0% | 11.4% | 12.3% | 10.5% | 11.7% | 13.1% | 10.3% |
| | 2007/09 | 10.7% | 10.8% | 10.6% | 11.0% | 12.0% | 10.1% | 11.1% | 12.6% | 9.7% |

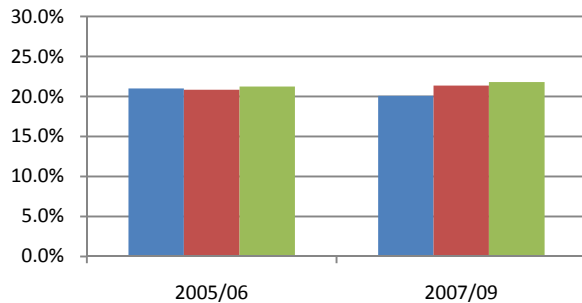
Source: Active People Survey, Year: 2005/06 (APS1), 2007/09 (APS2/3) or 2008/09 (APS3) if LA sample is boosted, Measure: NI8 participation

[For more information click here](#)

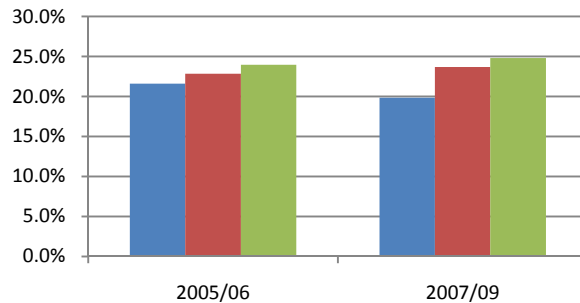
NB - The most recent data for this local authority is from the APS2/3 Dataset

NB - NI8 Key Indicator has been highlighted (i.e. 3x30 min sessions or more of moderate intensity activity a week)

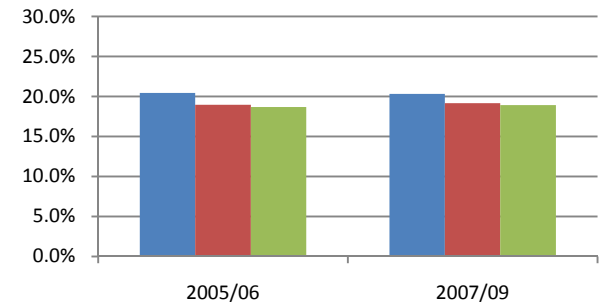
Total Participation (at least) 3x30 for APS1, 2&3



Male Participation (at least) 3x30 for APS1, 2&3



Female Participation (at least) 3x30 for APS1, 2&3



■ Hertsmere ■ East of England ■ England

■ Hertsmere ■ East of England ■ England

■ Hertsmere ■ East of England ■ England

NI8 Sport & Active Recreation Participation by year, duration and ethnicity

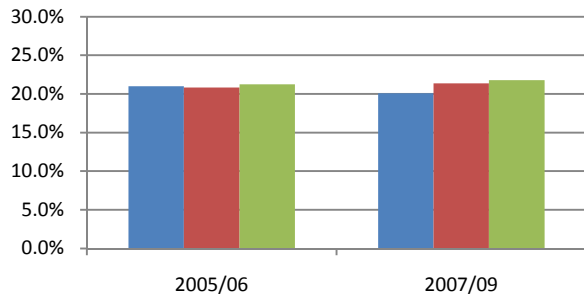
| Indicator | Year | Hertsmere | | | East of England | | | England | | |
|-----------------------|---------|-----------|-------|-----------|-----------------|-------|-----------|---------|-------|-----------|
| | | All | White | Non white | All | White | Non white | All | White | Non white |
| 0 days / 0x30 | 2005/06 | 48.9% | 48.7% | 52.2% | 49.0% | 48.9% | 50.9% | 50.0% | 49.6% | 54.3% |
| | 2007/09 | 44.8% | 42.6% | 55.6% | 46.9% | 46.7% | 50.4% | 47.8% | 47.2% | 53.1% |
| 1-3 days | 2005/06 | 10.2% | 10.7% | * | 9.2% | 9.2% | 9.9% | 8.8% | 8.8% | 9.0% |
| | 2007/09 | 10.2% | 10.1% | * | 9.6% | 9.7% | 9.3% | 9.0% | 9.0% | 9.0% |
| 4-7 days / 1x30 | 2005/06 | 10.9% | 10.9% | * | 12.5% | 12.5% | 12.7% | 12.0% | 12.1% | 11.2% |
| | 2007/09 | 11.9% | 13.2% | * | 13.2% | 13.3% | 12.0% | 12.7% | 12.8% | 11.9% |
| 8-11 days / 2x30 | 2005/06 | 8.7% | 8.7% | * | 8.4% | 8.5% | 7.2% | 8.0% | 8.1% | 6.8% |
| | 2007/09 | 13.1% | 13.7% | * | 8.9% | 9.0% | 8.9% | 8.7% | 8.8% | 7.7% |
| 12-19 days / 3x30 | 2005/06 | 10.1% | 10.1% | * | 9.5% | 9.5% | 9.0% | 9.6% | 9.6% | 9.0% |
| | 2007/09 | 9.5% | 9.3% | * | 10.3% | 10.3% | 10.5% | 10.7% | 10.8% | 9.6% |
| 12+ days / 3x30 - NI8 | 2005/06 | 21.0% | 21.1% | * | 20.8% | 20.9% | 19.3% | 21.3% | 21.5% | 18.7% |
| | 2007/09 | 20.1% | 20.4% | * | 21.4% | 21.4% | 19.4% | 21.8% | 22.2% | 18.3% |
| 20+ days / 5x30 | 2005/06 | 10.7% | 11.0% | * | 11.4% | 11.4% | 10.3% | 11.7% | 11.9% | 9.7% |
| | 2007/09 | 10.7% | 11.3% | * | 11.0% | 11.2% | 8.9% | 11.1% | 11.4% | 8.7% |

Source: Active People Survey, Year: 2005/06 (APS1), 2007/09 (APS2/3) or 2008/09 (APS3) if LA sample is boosted, Measure: NI8 participation

[For more information click here](#)

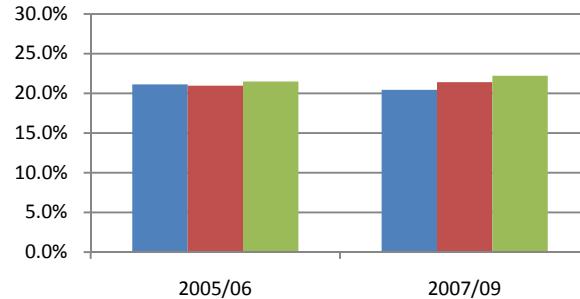
NB - The most recent data for this local authority is from the APS2/3 Dataset

Total Participation (at least) 3x30 for APS1, 2&3



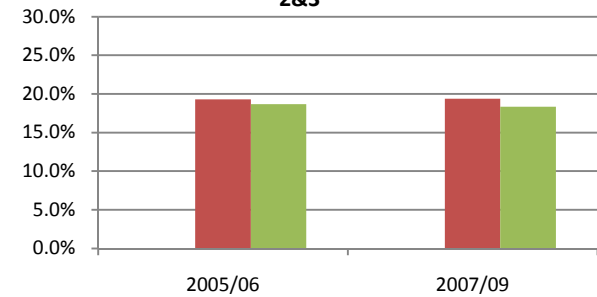
■ Hertsmere ■ East of England ■ England

White Participation (at least) 3x30 for APS1, 2&3



■ Hertsmere ■ East of England ■ England

Non-White Participation (at least) 3x30 for APS1, 2&3



■ Hertsmere ■ East of England ■ England

NI8 Sport & Active Recreation Participation by year, duration and disability

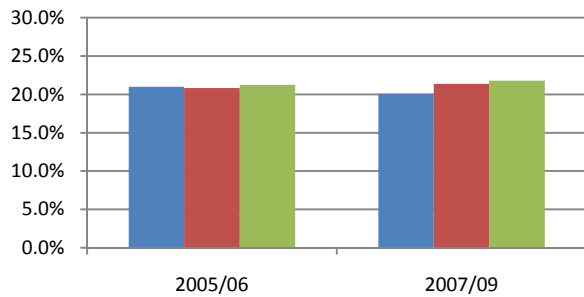
| Indicator | Year | Hertsmere | | | East of England | | | England | | |
|-----------------------|---------|-----------|---------------------|------------------------|-----------------|---------------------|------------------------|---------|---------------------|------------------------|
| | | All | Limiting disability | No limiting disability | All | Limiting disability | No limiting disability | All | Limiting disability | No limiting disability |
| 0 days / 0x30 | 2005/06 | 48.9% | 76.7% | 45.1% | 49.0% | 74.2% | 44.7% | 50.0% | 75.7% | 45.1% |
| | 2007/09 | 44.8% | 73.9% | 40.4% | 46.9% | 71.6% | 42.7% | 47.8% | 73.6% | 43.1% |
| 1-3 days | 2005/06 | 10.2% | * | 10.9% | 9.2% | 5.8% | 9.8% | 8.8% | 5.4% | 9.4% |
| | 2007/09 | 10.2% | * | 10.5% | 9.6% | 6.4% | 10.1% | 9.0% | 5.8% | 9.6% |
| 4-7 days / 1x30 | 2005/06 | 10.9% | * | 12.0% | 12.5% | 6.6% | 13.5% | 12.0% | 6.2% | 13.1% |
| | 2007/09 | 11.9% | * | 13.3% | 13.2% | 7.8% | 14.1% | 12.7% | 7.0% | 13.7% |
| 8-11 days / 2x30 | 2005/06 | 8.7% | * | 9.5% | 8.4% | 3.9% | 9.2% | 8.0% | 3.7% | 8.7% |
| | 2007/09 | 13.1% | * | 13.8% | 8.9% | 4.8% | 9.6% | 8.7% | 4.4% | 9.5% |
| 12-19 days / 3x30 | 2005/06 | 10.1% | * | 11.1% | 9.5% | 4.2% | 10.4% | 9.6% | 3.9% | 10.6% |
| | 2007/09 | 9.5% | * | 10.7% | 10.3% | 4.3% | 11.3% | 10.7% | 4.4% | 11.8% |
| 12+ days / 3x30 - NI8 | 2005/06 | 21.0% | * | 22.6% | 20.8% | 9.4% | 22.8% | 21.3% | 9.0% | 23.6% |
| | 2007/09 | 20.1% | * | 22.1% | 21.4% | 9.4% | 23.4% | 21.8% | 9.2% | 24.1% |
| 20+ days / 5x30 | 2005/06 | 10.7% | * | 11.5% | 11.4% | 5.3% | 12.4% | 11.7% | 5.1% | 12.9% |
| | 2007/09 | 10.7% | * | 11.4% | 11.0% | 5.0% | 12.1% | 11.1% | 4.8% | 12.3% |

Source: Active People Survey, Year: 2005/06 (APS1), 2007/09 (APS2/3) or 2008/09 (APS3) if LA sample is boosted, Measure: NI8 participation

[For more information click here](#)

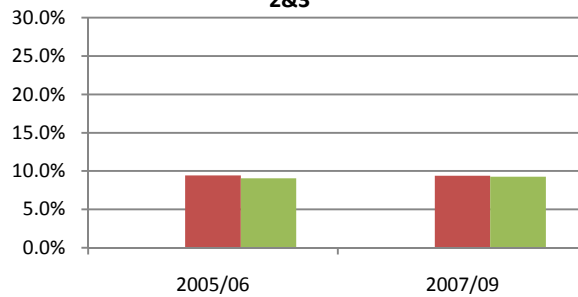
NB - The most recent data for this local authority is from the APS2/3 Dataset

Total Participation (at least) 3x30 for APS1, 2&3



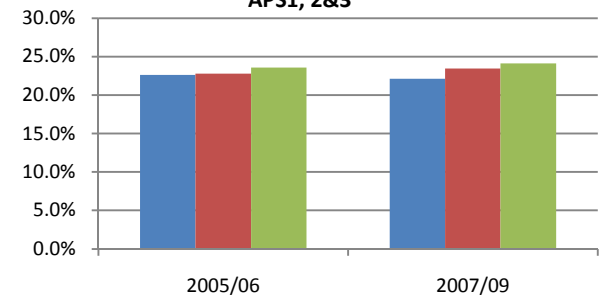
■ Hertsmere ■ East of England ■ England

Disabled Participation (at least) 3x30 for APS1, 2&3



■ Hertsmere ■ East of England ■ England

Non-Disabled Participation (at least) 3x30 for APS1, 2&3



■ Hertsmere ■ East of England ■ England

NI8 Sport & Active Recreation Participation by year, duration, age band and socio-economic class

| Indicator | Year | Hertsmere | | | | | | | | | | | |
|-----------------------|---------|-----------|-------|-------|-------|-------|-------|-------|-------|------------|----------|----------|------------|
| | | All | 16-19 | 20-24 | 25-29 | 30-34 | 35-44 | 45-64 | 65+ | NS SEC 1-2 | NS SEC 3 | NS SEC 4 | NS SEC 5-8 |
| 0 days / 0x30 | 2005/06 | 48.9% | * | * | * | 47.9% | 36.6% | 48.2% | 69.1% | 41.9% | 54.6% | 45.7% | 61.8% |
| | 2007/09 | 44.8% | * | * | * | * | 42.3% | 49.1% | 63.2% | 40.2% | 51.0% | 49.1% | 50.8% |
| 1-3 days | 2005/06 | 10.2% | * | * | * | * | * | * | * | 11.2% | * | * | * |
| | 2007/09 | 10.2% | * | * | * | * | * | 11.0% | * | 9.8% | * | * | * |
| 4-7 days / 1x30 | 2005/06 | 10.9% | * | * | * | * | * | 13.6% | * | 10.9% | * | * | * |
| | 2007/09 | 11.9% | * | * | * | * | * | 11.0% | * | 14.2% | * | * | * |
| 8-11 days / 2x30 | 2005/06 | 8.7% | * | * | * | * | * | * | * | 10.9% | * | * | * |
| | 2007/09 | 13.1% | * | * | * | * | * | 10.1% | * | 14.6% | * | * | * |
| 12-20 days / 3x30 | 2005/06 | 10.1% | * | * | * | * | * | * | * | 13.2% | * | * | * |
| | 2007/09 | 9.5% | * | * | * | * | * | 10.1% | * | 8.7% | * | * | * |
| 12+ days / 3x30 - NI8 | 2005/06 | 21.0% | * | * | * | * | 28.3% | 20.4% | * | 24.8% | * | * | 14.2% |
| | 2007/09 | 20.1% | * | * | * | * | 20.8% | 18.8% | * | 21.2% | * | * | 17.9% |
| 20+ days / 5x30 | 2005/06 | 10.7% | * | * | * | * | 16.6% | * | * | 11.7% | * | * | * |
| | 2007/09 | 10.7% | * | * | * | * | * | 8.7% | * | 12.2% | * | * | * |

Source: Active People Survey, Year: 2005/06 (APS1), 2007/09 (APS2/3) or 2008/09 (APS3) if LA sample is boosted, Measure: NI8 participation

[For more information click here](#)

NB - The most recent data for this local authority is from the APS2/3 Dataset

Expected participation in 3x30 (or more) sessions a week

| Expected Participation | Hertsmere | | East of England | | England | |
|------------------------|-----------|---------|-----------------|---------|---------|---------|
| | 2005/06 | 2007/09 | 2005/06 | 2007/09 | 2005/06 | 2007/09 |
| Expected | 22.6% | 23.6% | 21.4% | 21.8% | 21.9% | 22.5% |
| Observed | 21.0% | 20.1% | 20.8% | 21.4% | 21.3% | 21.8% |
| Difference | -1.6% | -3.6% | -0.6% | -0.4% | -0.6% | -0.7% |

Source: Mindshare, Year 2005/06-2007/9, Measure: 3x30 minute sport sessions a week (NI8)

[For more information click here](#)

NB: 2007/09 refers to the combined APS2-APS3 sample

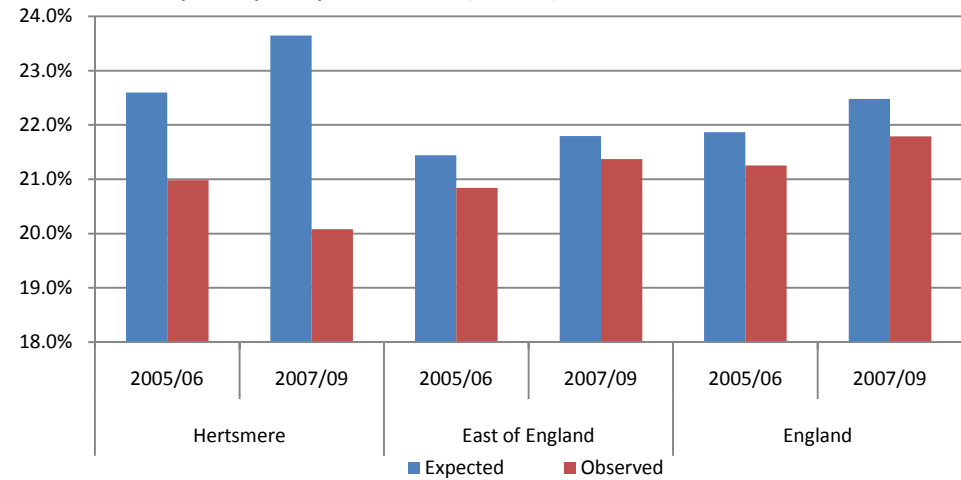
Health costs of sporting inactivity

| Geography | The Health Costs of Sporting Inactivity | |
|-----------------|---|----------------------|
| | Cost | Cost per 100,000 pop |
| Hertsmere | £562,971 | £741,727 |
| East of England | £69,797,670 | £1,590,286 |
| England | £764,661,980 | £1,898,293 |

Source: Department of Health - Be Active Be Healthy, Year: 2006/7, Measure: Cost of sporting inactivity

[For more information click here](#)

Expected participation in 3x30 (or more) sessions a week



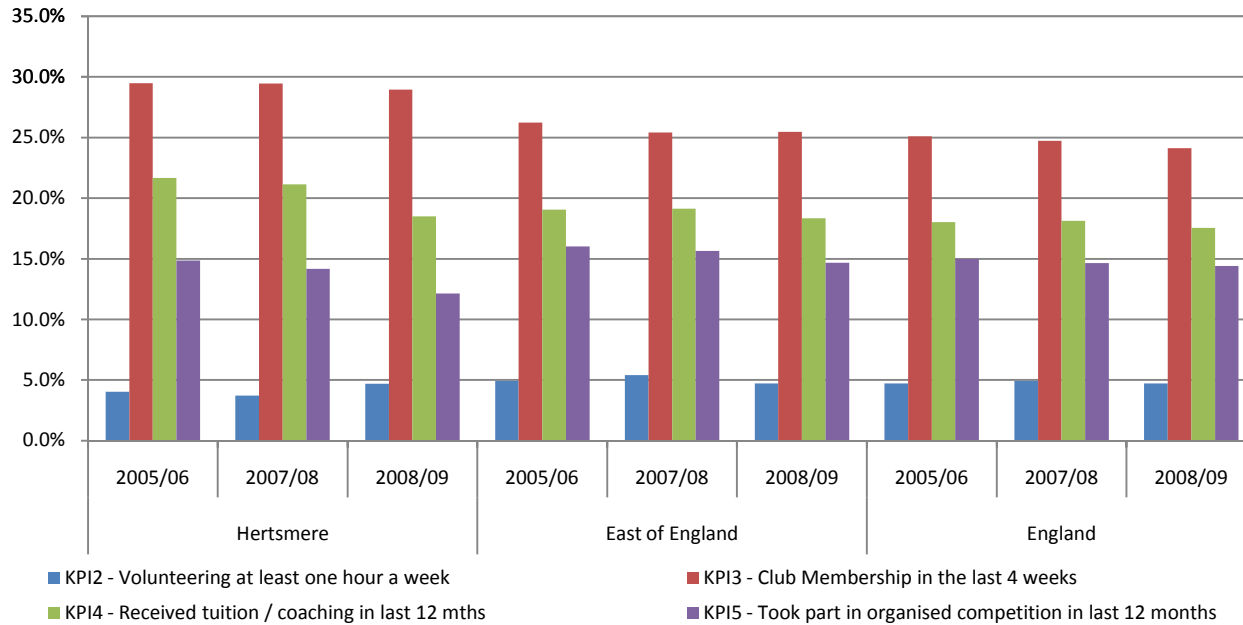
Key Performance Indicators (KPI)

| Indicator | Hertsmere | | | East of England | | | England | | |
|---|-----------|---------|---------|-----------------|---------|---------|---------|---------|---------|
| | 2005/06 | 2007/08 | 2008/09 | 2005/06 | 2007/08 | 2008/09 | 2005/06 | 2007/08 | 2008/09 |
| KPI2 - Volunteering at least one hour a week | 4.0% | 3.7% | 4.7% | 4.9% | 5.4% | 4.7% | 4.7% | 4.9% | 4.7% |
| KPI3 - Club Membership in the last 4 weeks | 29.5% | 29.4% | 28.9% | 26.2% | 25.4% | 25.5% | 25.1% | 24.7% | 24.1% |
| KPI4 - Received tuition / coaching in last 12 mths | 21.7% | 21.1% | 18.5% | 19.0% | 19.1% | 18.3% | 18.0% | 18.1% | 17.5% |
| KPI5 - Took part in organised competition in last 12 months | 14.9% | 14.2% | 12.1% | 16.0% | 15.7% | 14.7% | 15.0% | 14.6% | 14.4% |
| KPI6 - Satisfaction with local provision | 75.8% | 70.9% | 74.6% | 71.0% | 68.2% | 69.7% | 69.5% | 66.6% | 68.4% |

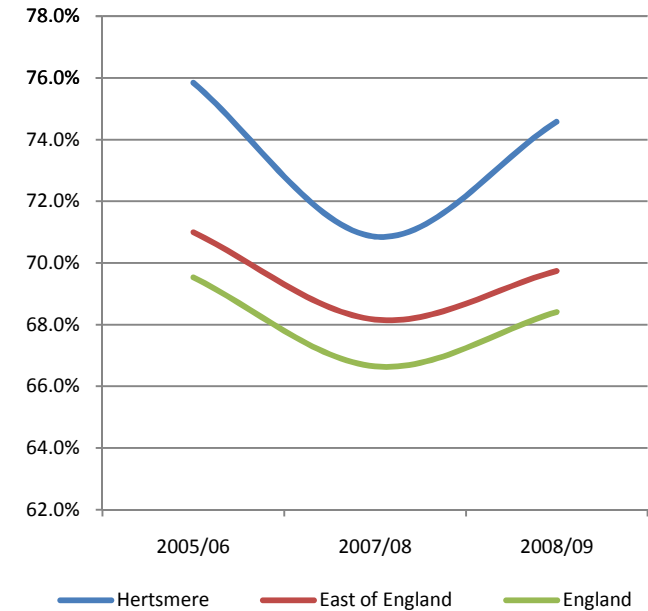
Source: Active People Survey , Year: 2005/06-2008/09, Measure: Key Performance Indicators 2, 3, 4, 5, 6

[For more information click here](#)

Understanding key performance indicators - KPI2, KPI3, KPI4 and KPI5



KPI6 - Satisfaction with local provision



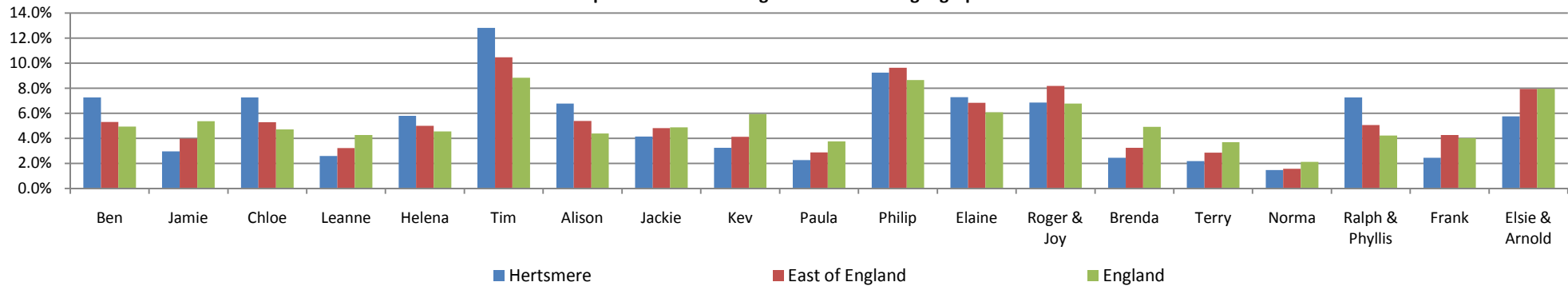
Market segmentation

| Code | Name | Description | Hertsmere | | East of England | | England | |
|-------|-----------------|----------------------------|-----------|--------|-----------------|--------|----------|--------|
| | | | Number | Rate | Number | Rate | Number | Rate |
| A01 | Ben | Competitive Male Urbanites | 5.4 | 7.3% | 236.4 | 5.3% | 1,989.1 | 4.9% |
| A02 | Jamie | Sports Team Drinkers | 2.2 | 3.0% | 177.6 | 4.0% | 2,162.9 | 5.4% |
| A03 | Chloe | Fitness Class Friends | 5.4 | 7.3% | 236.0 | 5.3% | 1,896.5 | 4.7% |
| A04 | Leanne | Supportive Singles | 1.9 | 2.6% | 143.5 | 3.2% | 1,711.6 | 4.3% |
| B05 | Helena | Career Focused Females | 4.3 | 5.8% | 222.6 | 5.0% | 1,829.8 | 4.5% |
| B06 | Tim | Settling Down Males | 9.6 | 12.8% | 467.1 | 10.5% | 3,554.0 | 8.8% |
| B07 | Alison | Stay at Home Mums | 5.1 | 6.8% | 240.1 | 5.4% | 1,766.4 | 4.4% |
| B08 | Jackie | Middle England Mums | 3.1 | 4.1% | 215.0 | 4.8% | 1,965.0 | 4.9% |
| B09 | Kev | Pub League Team Mates | 2.4 | 3.2% | 183.4 | 4.1% | 2,386.6 | 5.9% |
| B10 | Paula | Stretched Single Mums | 1.7 | 2.3% | 128.0 | 2.9% | 1,507.3 | 3.7% |
| C11 | Philip | Comfortable Mid-Life Males | 6.9 | 9.2% | 429.2 | 9.6% | 3,480.0 | 8.6% |
| C12 | Elaine | Empty Nest Career Ladies | 5.4 | 7.3% | 304.8 | 6.8% | 2,443.9 | 6.1% |
| C13 | Roger & Joy | Early Retirement Couples | 5.1 | 6.9% | 365.2 | 8.2% | 2,723.7 | 6.8% |
| C14 | Brenda | Older Working Women | 1.8 | 2.5% | 144.8 | 3.2% | 1,976.8 | 4.9% |
| C15 | Terry | Local 'Old Boys' | 1.6 | 2.2% | 127.4 | 2.9% | 1,484.5 | 3.7% |
| C16 | Norma | Later Life Ladies | 1.1 | 1.5% | 70.3 | 1.6% | 855.0 | 2.1% |
| D17 | Ralph & Phyllis | Comfortable Retired Couple | 5.4 | 7.3% | 225.4 | 5.1% | 1,700.2 | 4.2% |
| D18 | Frank | Twilight Year Gents | 1.8 | 2.4% | 189.8 | 4.3% | 1,612.9 | 4.0% |
| D19 | Elsie & Arnold | Retirement Home Singles | 4.3 | 5.8% | 354.3 | 7.9% | 3,206.3 | 8.0% |
| Total | | | 74.8 | 100.0% | 4,460.9 | 100.0% | 40,252.4 | 100.0% |

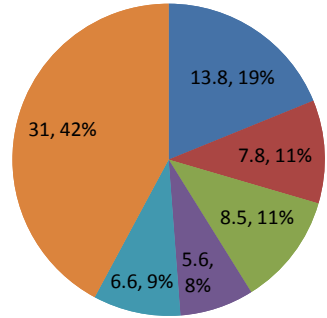
Source: Sport England and Experian Ltd, Year: 2010, Measure: Sport Market Segmentation

[For more information click here](#)

Comparison of Market Segmentation across geographies



Hertsmere - Top 5 Sports



■ Swimming ■ Gym ■ Cycling ■ Football ■ Athletics ■ Remaining

Top 5 sports in local authority with regional and national comparison

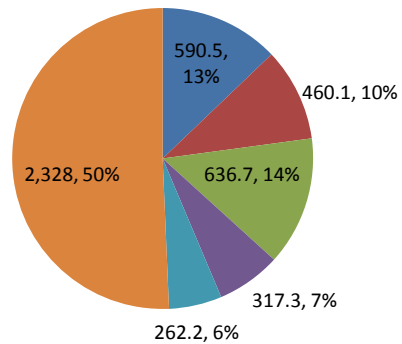
| Sport | Hertsmere | | East of England | | England | |
|-----------|-----------|-------|-----------------|-------|---------|-------|
| | Number | Rate | Number | Rate | Number | Rate |
| Swimming | 13.8 | 18.8% | 590.5 | 12.9% | 5,352.0 | 12.9% |
| Gym | 7.8 | 10.7% | 460.1 | 10.0% | 4,380.8 | 10.6% |
| Cycling | 8.5 | 11.6% | 636.7 | 13.9% | 4,983.3 | 12.0% |
| Football | 5.6 | 7.7% | 317.3 | 6.9% | 3,016.2 | 7.3% |
| Athletics | 6.6 | 9.1% | 262.2 | 5.7% | 2,589.5 | 6.3% |

Source: Active People Survey3, Population data ONS Annual Population Survey 2008

Measure: Participation rate of the top 5 sports and the number of people that participate at least once per month

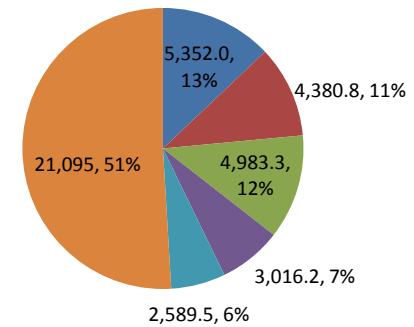
[For more information click here](#)

East of England - Top 5 Sports



■ Swimming ■ Gym ■ Cycling ■ Football ■ Athletics ■ Remaining

England - Top 5 Sports



■ Swimming ■ Gym ■ Cycling ■ Football ■ Athletics ■ Remaining

Sporting Facilities within Hertsmere

Number of facilities by type

| Facilities | Hertsmere | East of England | |
|------------------------|------------|-----------------|----------------------|
| | Number | Number | Proportion of Region |
| Athletics Tracks | 0 | 33 | 0.0% |
| Golf | 15 | 429 | 3.5% |
| Grass Pitches | 96 | 5,200 | 1.8% |
| Health & Fitness Suite | 19 | 690 | 2.8% |
| Ice Rinks | 0 | 3 | 0.0% |
| Indoor Bowls | 0 | 73 | 0.0% |
| Indoor Tennis Centre | 2 | 51 | 3.9% |
| Ski Slopes | 0 | 25 | 0.0% |
| Sports Hall | 28 | 1,166 | 2.4% |
| Swimming Pool | 19 | 634 | 3.0% |
| Artificial Grass Pitch | 6 | 197 | 3.0% |
| Total | 185 | 8,501 | 2.2% |

Source: Active Places Power, Year: Jan 2010

Measure: Number of sporting facilities

[For more information click here](#)

| | |
|---|------|
| Population of Hertsmere as a proportion of East of England population | 1.6% |
|---|------|

Access types of sporting facilities by local authority area

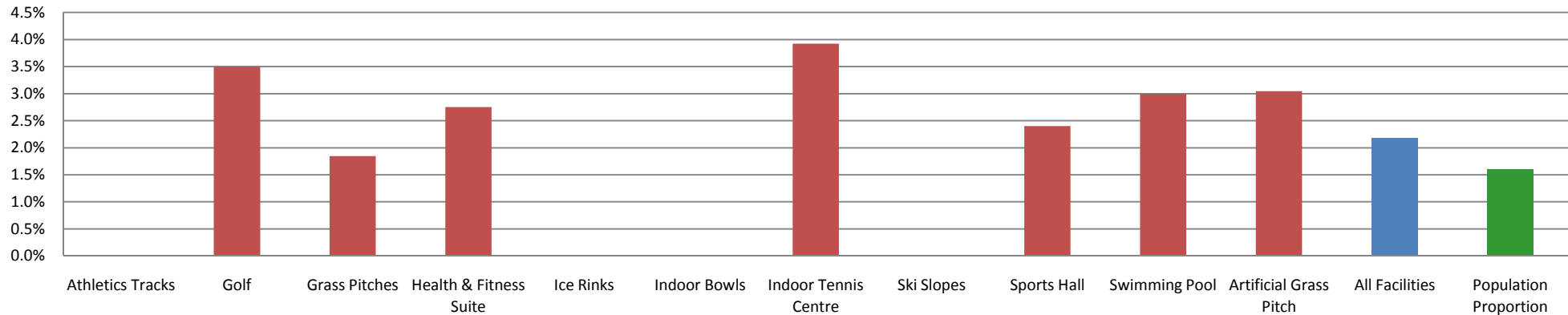
| Facilities | Count | Number | | Percentage | |
|--------------------------|---------------|---------------|---------------|------------|------------|
| | | Public | Private | Public | Private |
| Athletics Tracks | 0 | 0 | 0 | - | - |
| Golf | 15 | 15 | 0 | 100% | 0% |
| Grass Pitches | 96 | 64 | 32 | 67% | 33% |
| Health and Fitness Suite | 19 | 16 | 3 | 84% | 16% |
| Ice Rinks | 0 | 0 | 0 | - | - |
| Indoor Bowls | 0 | 0 | 0 | - | - |
| Indoor Tennis Centre | 2 | 2 | 0 | 100% | 0% |
| Ski Slopes | 0 | 0 | 0 | - | - |
| Sports Hall | 28 | 24 | 4 | 86% | 14% |
| Swimming Pool | 19 | 19 | 0 | 100% | 0% |
| Artificial Grass Pitch | 6 | 4 | 2 | 67% | 33% |
| Total | 185 | 144 | 41 | 78% | 22% |
| East of England | 8,501 | 7,334 | 1,167 | 86% | 14% |
| England | 65,124 | 52,907 | 12,217 | 81% | 19% |

Source: Active Places Power: Year: Jan 2010

Measure: Number & proportion of sporting facilities that are for private use or public access

[For more information click here](#)

Proportion of Region



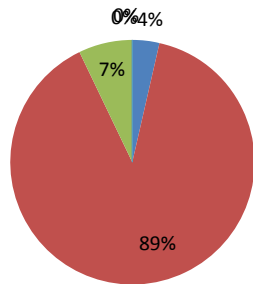
Ownership types of sporting facilities by local authority area

| Facilities | Count | Ownership Type | | | | | Ownership Type | | | | |
|--------------------------|---------------|----------------|---------------|-----------------|-----------|--------------|----------------|------------|-----------------|-----------|------------|
| | | Commercial | Education | Local Authority | Not Known | Others | Commercial | Education | Local Authority | Not Known | Others |
| Athletics Tracks | 0 | 0 | 0 | 0 | 0 | 0 | - | - | - | - | - |
| Golf | 15 | 9 | 0 | 2 | 0 | 4 | 60% | 0% | 13% | 0% | 27% |
| Grass Pitches | 96 | 1 | 62 | 25 | 0 | 8 | 1% | 65% | 26% | 0% | 8% |
| Health and Fitness Suite | 19 | 9 | 6 | 4 | 0 | 0 | 47% | 32% | 21% | 0% | 0% |
| Ice Rinks | 0 | 0 | 0 | 0 | 0 | 0 | - | - | - | - | - |
| Indoor Bowls | 0 | 0 | 0 | 0 | 0 | 0 | - | - | - | - | - |
| Indoor Tennis Centre | 2 | 2 | 0 | 0 | 0 | 0 | 100% | 0% | 0% | 0% | 0% |
| Ski Slopes | 0 | 0 | 0 | 0 | 0 | 0 | - | - | - | - | - |
| Sports Hall | 28 | 1 | 25 | 2 | 0 | 0 | 4% | 89% | 7% | 0% | 0% |
| Swimming Pool | 19 | 11 | 2 | 6 | 0 | 0 | 58% | 11% | 32% | 0% | 0% |
| Artificial Grass Pitch | 6 | 0 | 4 | 1 | 0 | 1 | 0% | 67% | 17% | 0% | 17% |
| Total | 185 | 33 | 99 | 40 | 0 | 13 | 18% | 54% | 22% | 0% | 7% |
| East of England | 8,501 | 1,113 | 4,007 | 2,265 | 7 | 1,109 | 13% | 47% | 27% | 0% | 13% |
| England | 65,124 | 8,385 | 30,588 | 16,968 | 54 | 9,129 | 13% | 47% | 26% | 0% | 14% |

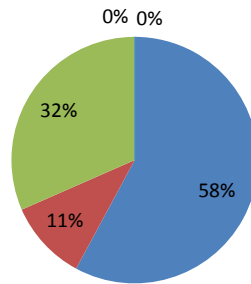
Source: Active Places Power: Year: Jan 2010: Measure: Number of sporting facilities by type of owner

[For more information click here](#)

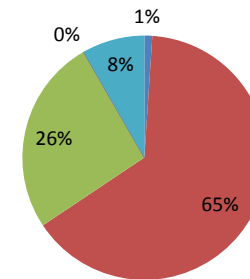
Sports Hall



Swimming Pool



Grass Pitches



Commercial Education Local Authority Not Known Others

Commercial Education Local Authority Not Known Others

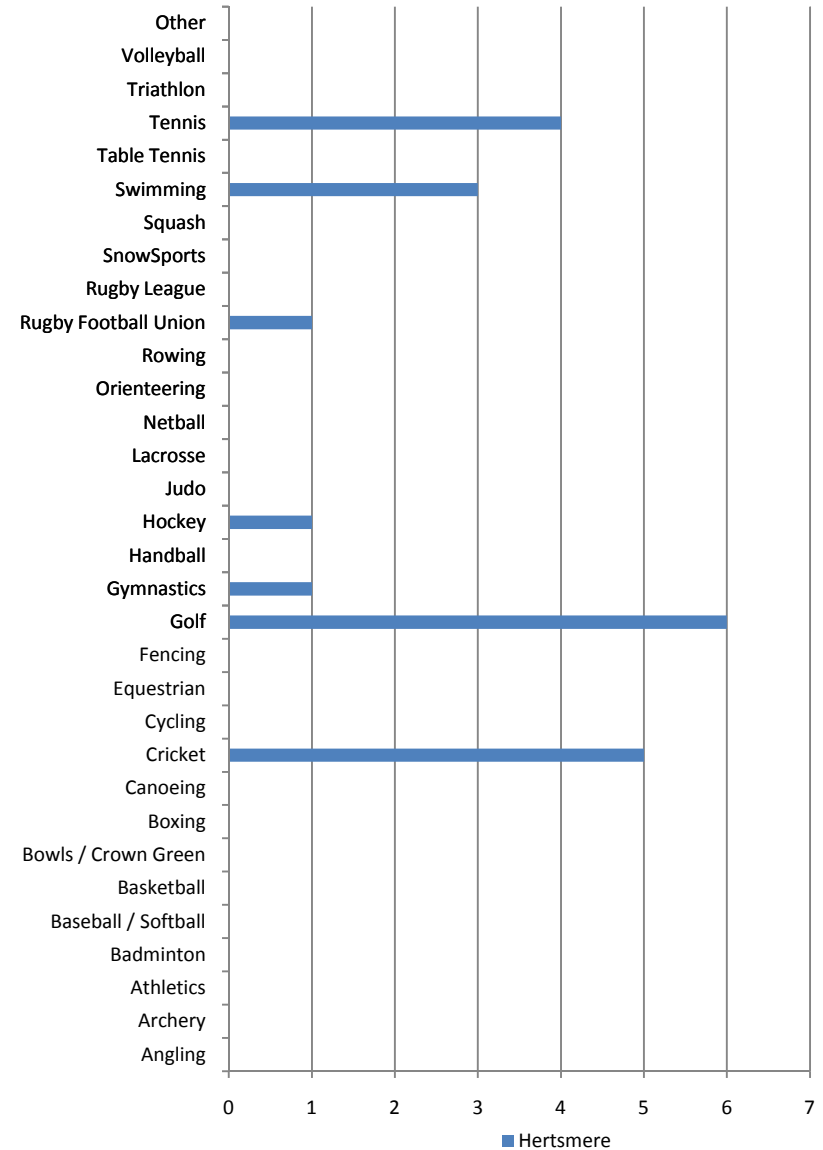
Commercial Education Local Authority Not Known Others

Number of clubmark clubs by sporting activity type

[For more information click here](#)

| Clubmark Type | Hertsmere Number | East of England Number | England Number |
|----------------------|---------------------|---------------------------|-------------------|
| Angling | 0 | 13 | 80 |
| Archery | 0 | 7 | 60 |
| Athletics | 0 | 42 | 353 |
| Badminton | 0 | 45 | 300 |
| Baseball / Softball | 0 | 0 | 4 |
| Basketball | 0 | 10 | 144 |
| Bowls / Crown Green | 0 | 3 | 18 |
| Boxing | 0 | 5 | 50 |
| Canoeing | 0 | 13 | 151 |
| Cricket | 5 | 294 | 2,464 |
| Cycling | 0 | 29 | 222 |
| Equestrian | 0 | 15 | 87 |
| Fencing | 0 | 6 | 66 |
| Golf | 6 | 142 | 999 |
| Gymnastics | 1 | 63 | 614 |
| Handball | 0 | 0 | 7 |
| Hockey | 1 | 62 | 465 |
| Judo | 0 | 43 | 351 |
| Lacrosse | 0 | 3 | 35 |
| Netball | 0 | 69 | 455 |
| Orienteering | 0 | 6 | 47 |
| Rowing | 0 | 9 | 127 |
| Rugby Football Union | 1 | 92 | 865 |
| Rugby League | 0 | 4 | 257 |
| SnowSports | 0 | 4 | 24 |
| Squash | 0 | 24 | 251 |
| Swimming | 3 | 77 | 820 |
| Table Tennis | 0 | 21 | 238 |
| Tennis | 4 | 130 | 1,022 |
| Triathlon | 0 | 10 | 72 |
| Volleyball | 0 | 6 | 86 |
| Other | 0 | 35 | 183 |
| Total | 21 | 1,282 | 10,917 |

Number of clubmark clubs in the local authority



Source: Clubmark: Year: 2010 Measure: Number of clubmark clubs by sporting activity type by local authority area

Comparisons with nearest neighbours of Hertsmere

Population compared with nearest neighbours (000s)

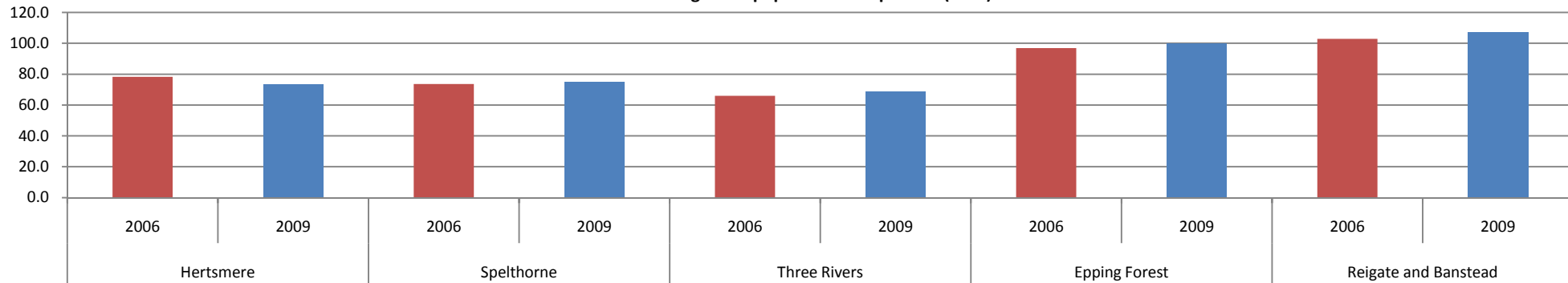
| Indicator | Hertsmere | | Spelthorne | | Three Rivers | | Epping Forest | | Reigate and Banstead | |
|---------------|-------------|-------------|-------------|-------------|--------------|-------------|---------------|--------------|----------------------|--------------|
| | 2006 | 2009 | 2006 | 2009 | 2006 | 2009 | 2006 | 2009 | 2006 | 2009 |
| Male | 36.7 | 34.5 | 35.9 | 36.6 | 32.0 | 32.7 | 44.7 | 46.6 | 50.3 | 52.1 |
| Female | 41.5 | 38.8 | 37.7 | 38.3 | 33.9 | 36.1 | 52.2 | 53.5 | 52.5 | 54.8 |
| 16 to 19 | 4.7 | 5.2 | 3.6 | 2.7 | 4.9 | 5.2 | 6.5 | 5.9 | 7.2 | 7.8 |
| 20 to 24 | 3.0 | 2.0 | 6.3 | 5.8 | 5.2 | 6.2 | 8.6 | 6.8 | 4.9 | 7.3 |
| 25 to 34 | 9.8 | 15.0 | 13.3 | 11.1 | 8.3 | 7.4 | 15.3 | 12.8 | 14.9 | 19.0 |
| 35 to 49 | 21.4 | 21.8 | 15.5 | 23.0 | 22.5 | 19.0 | 26.5 | 29.6 | 30.6 | 28.5 |
| 50 to 64 | 22.1 | 17.8 | 20.1 | 16.7 | 11.9 | 18.1 | 22.5 | 23.6 | 25.9 | 25.4 |
| 65+ | 17.2 | 11.5 | 14.8 | 15.6 | 13.2 | 13.0 | 17.7 | 21.4 | 19.3 | 18.9 |
| White | 69.8 | 64.1 | 69.0 | 65.7 | 59.6 | 59.0 | 89.7 | 93.7 | 95.3 | 96.3 |
| Non-White | 8.4 | 9.1 | 4.5 | 9.3 | 6.0 | 9.9 | 6.8 | 5.8 | 7.5 | 10.7 |
| DDA & also w | 6.1 | 4.4 | 5.2 | 2.2 | 2.7 | 7.8 | 6.5 | 8.2 | 6.3 | 5.4 |
| DDA only disa | 3.6 | 3.2 | 1.7 | 3.2 | 1.8 | 3.7 | 4.9 | 3.4 | 3.1 | 4.8 |
| Work-limiting | 1.2 | 1.8 | 1.4 | 2.0 | 2.0 | * | 2.8 | 2.5 | 3.2 | 2.6 |
| Not disabled | 50.1 | 52.4 | 50.4 | 51.9 | 46.3 | 44.1 | 65.1 | 64.6 | 70.8 | 75.4 |
| Total | 78.2 | 73.3 | 73.6 | 74.9 | 65.9 | 68.9 | 96.9 | 100.1 | 102.8 | 107.0 |

Source: Annual Population Survey, Year: 2006-09, Measure: Adult population (16+)

[For more information on nearest neighbour selection click here](#)

[For more information on population statistics click here](#)

Nearest neighbour population comparison (000s)



Comparisons with nearest neighbours of Hertsmere

Total area in sq km

| Geography | Total Area in sq km | Proportion of England |
|----------------------|---------------------|-----------------------|
| Hertsmere | 101.2 | 0.1% |
| Spelthorne | 44.9 | 0.0% |
| Three Rivers | 88.8 | 0.1% |
| Epping Forest | 339.0 | 0.3% |
| Reigate and Banstead | 129.1 | 0.1% |

| | |
|---------|-----------|
| England | 130,278.5 |
|---------|-----------|

Source: Office of National Statistics Year: 2007

Measure: Area measurements for local authority areas by sq km

[For more information click here](#)

Deprivation levels by local authority as measured by the Index of Multiple Deprivation (IMD)

| Geography | IMD Score 2007 | Rank (out of 353) |
|----------------------|----------------|-------------------|
| Hertsmere | 12.86 | 247 |
| Spelthorne | 12.18 | #N/A |
| Three Rivers | 10.74 | 284 |
| Epping Forest | 14.33 | 225 |
| Reigate and Banstead | 8.59 | #N/A |

Source: Department for Communities and Local Government

Year: 2007 Measure: Index of multiple deprivation and rank in region and nation

[For more information click here](#)

Obesity levels in adults and children by local authority area

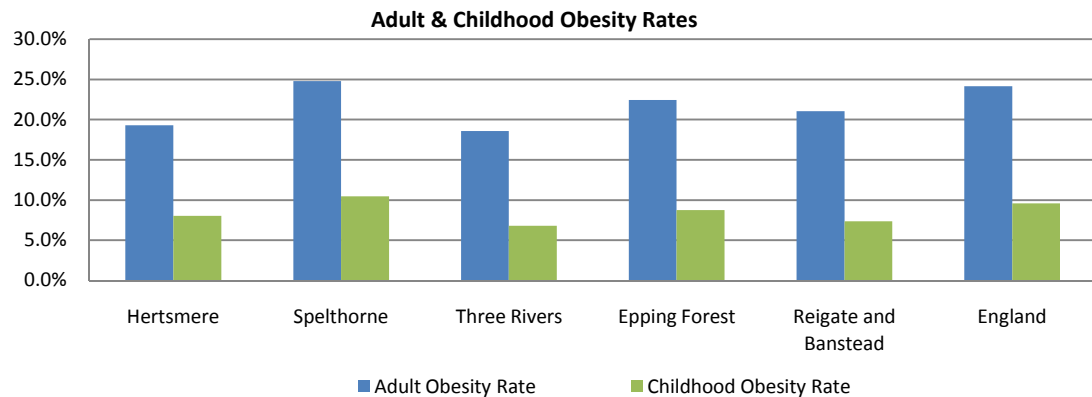
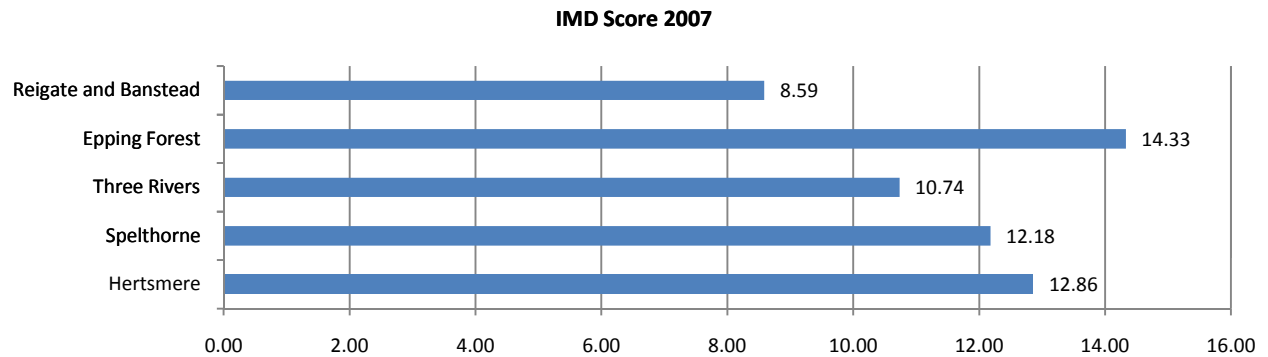
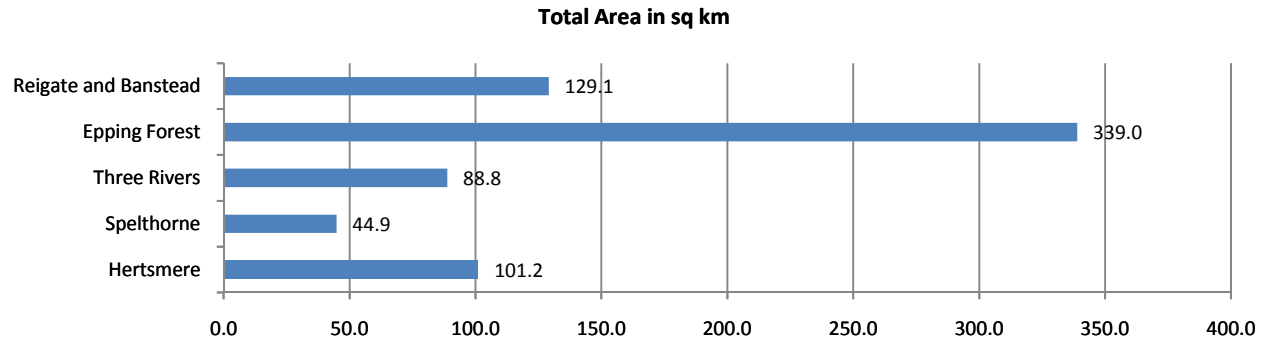
| Geography | Adult Obesity Rate | Childhood Obesity Rate |
|----------------------|--------------------|------------------------|
| Hertsmere | 19.3% | 8.0% |
| Spelthorne | 24.8% | 10.4% |
| Three Rivers | 18.6% | 6.8% |
| Epping Forest | 22.4% | 8.8% |
| Reigate and Banstead | 21.1% | 7.3% |

| | | |
|---------|-------|------|
| England | 24.2% | 9.6% |
|---------|-------|------|

Source: Department of Health, Year: 2006-2008,

Measure: Proportion of the adult and child population that are obese

[For more information click here](#)



Comparisons with nearest neighbours of Hertsmere

Ni8 Sport and Active Recreation Participation at least 3x30 per week compared to nearest neighbours

| Indicator | Hertsmere | | Spelthorne | | Three Rivers | | Epping Forest | | Reigate and Banstead | |
|-----------------|--------------|--------------|--------------|--------------|--------------|--------------|---------------|--------------|----------------------|--------------|
| | 2005/06 | 2007/09 | 2005/06 | 2007/09 | 2005/06 | 2007/09 | 2005/06 | 2007/09 | 2005/06 | 2007/09 |
| Male | 21.6% | 19.8% | 24.2% | 24.6% | 27.5% | 25.6% | 23.4% | 23.8% | 25.6% | 27.1% |
| Female | 20.4% | 20.3% | 19.9% | 19.3% | 19.2% | 21.2% | 19.0% | 19.9% | 21.4% | 19.3% |
| 16 to 19 | * | * | * | * | * | * | * | * | * | * |
| 20 to 24 | * | * | * | * | * | * | * | * | * | * |
| 25 to 29 | * | * | * | * | * | * | * | * | * | * |
| 30 to 34 | * | * | * | * | 36.0% | * | * | * | * | * |
| 35 to 44 | 28.3% | 20.8% | 23.3% | 25.1% | 25.6% | 29.1% | 27.9% | 24.4% | 26.1% | 21.9% |
| 45 to 64 | 20.4% | 18.8% | 17.4% | 17.0% | 20.3% | 21.6% | 17.8% | 19.9% | 24.6% | 23.8% |
| 65+ | * | * | * | * | * | * | * | * | 14.5% | * |
| White | 21.1% | 20.4% | 22.0% | 22.6% | 23.5% | 23.9% | 21.1% | 21.6% | 23.3% | 23.5% |
| Non-White | * | * | * | * | * | * | * | * | * | * |
| Limiting disab | * | * | * | * | * | * | * | * | * | * |
| No limiting dis | 22.6% | 22.1% | 23.8% | 24.3% | 24.0% | 25.5% | 23.0% | 23.4% | 24.9% | 25.1% |
| NS-SEC 1-2 | 24.8% | 21.2% | 24.2% | 23.0% | 23.9% | 23.5% | 24.5% | 26.7% | 26.0% | 24.7% |
| NS-SEC 3 | * | * | 19.5% | * | * | * | * | * | 24.4% | * |
| NS-SEC 4 | * | * | * | * | * | * | * | * | * | * |
| NS-SEC 5-8 | 14.2% | 17.9% | 20.8% | 21.1% | 21.6% | 17.3% | 15.9% | 20.6% | 19.0% | 21.0% |
| Total | 21.0% | 20.1% | 22.0% | 21.9% | 23.2% | 23.3% | 21.2% | 21.8% | 23.4% | 23.0% |

Source: Active People Survey, Year: 2006 (APS1) & 2009 (APS3), Measure: Participation in 3x30 minute sessions

[For more information click here](#)

Ni8 Expected Sport and Active Recreation Participation at least 3x30 per weel compared to nearest neighbours

| Expected Participation | Hertsmere | | Spelthorne | | Three Rivers | | Epping Forest | | Reigate and Banstead | |
|------------------------|-----------|---------|------------|---------|--------------|---------|---------------|---------|----------------------|---------|
| | 2005/06 | 2007/09 | 2005/06 | 2007/09 | 2005/06 | 2007/09 | 2005/06 | 2007/09 | 2005/06 | 2007/09 |
| Expected | 22.6% | 23.6% | 23.8% | 22.0% | 23.7% | 24.1% | 23.0% | 22.7% | 25.0% | 24.4% |
| Observed | 21.0% | 20.1% | 22.0% | 21.9% | 23.2% | 23.3% | 21.2% | 21.8% | 23.4% | 23.0% |
| Difference | -1.6% | -3.6% | -1.8% | -0.1% | -0.5% | -0.8% | -1.8% | -0.9% | -1.6% | -1.4% |

Source: Mindshare, Year 2006-2007/9, Measure: 3x30 minute sport sessions a week (Ni8)

NB: 2007/09 refers to the combined APS2 and APS3 sample

[For more information click here](#)

Comparisons with nearest neighbours of Hertsmere

Number of facilities compared with nearest neighbours

| Facilities | Hertsmere Number | Spelthorne Number | Three Rivers Number | Epping Forest Number | Reigate and Banstead Number |
|--------------------------|---------------------|----------------------|------------------------|-------------------------|--------------------------------|
| Athletics Tracks | 0 | 0 | 1 | 0 | 1 |
| Golf | 15 | 6 | 13 | 20 | 11 |
| Grass Pitches | 96 | 51 | 87 | 97 | 86 |
| Health & Fitness Suite | 19 | 12 | 10 | 18 | 11 |
| Ice Rinks | 0 | 0 | 0 | 0 | 0 |
| Indoor Bowls | 0 | 0 | 0 | 1 | 1 |
| Indoor Tennis Centre | 2 | 0 | 0 | 1 | 0 |
| Ski Slopes | 0 | 0 | 0 | 0 | 0 |
| Sports Hall | 28 | 17 | 18 | 20 | 23 |
| Swimming Pool | 19 | 10 | 9 | 15 | 14 |
| Artificial Grass Pitch | 6 | 4 | 5 | 5 | 6 |
| Total | 185 | 100 | 143 | 177 | 153 |
| Population (000s) | 73.3 | 74.9 | 68.9 | 100.1 | 107.0 |

Source: Active Places Power, Population Data: ONS Annual Population Survey 2009, Year: Jan 2010, Measure: Number of sporting facilities

[For more information click here](#)

Number of facilities compared with nearest neighbours

