

SELECT THE AREA YOU WOULD LIKE TO VIEW FROM THE DROP DOWN BOX



East of England - Watford



Sport England Local Sport Profile for Watford

Understanding demographics within Watford

Demographic characteristic count (000s)

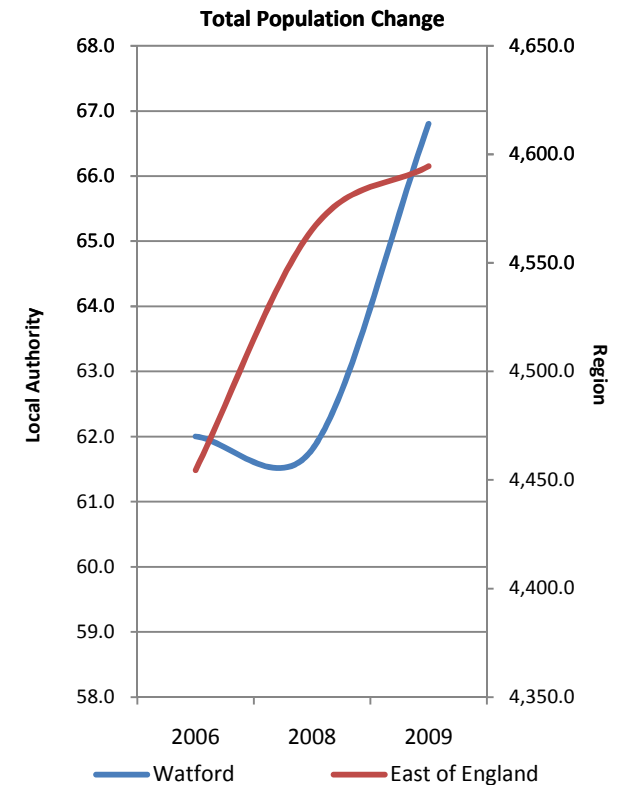
Indicator	Watford			East of England			England		
	2006	2008	2009	2006	2008	2009	2006	2008	2009
Male	31.4	30.5	32.6	2,167.6	2,229.3	2,250.6	19,667.9	20,056.9	20,237.7
Female	30.7	31.3	34.2	2,286.6	2,336.4	2,344.1	20,743.9	21,028.4	21,178.5
Total	62.0	61.8	66.8	4,454.5	4,565.3	4,594.6	40,411.0	41,083.8	41,416.8
16 to 19	3.5	6.5	6.0	277.1	284.8	282.4	2,618.5	2,647.5	2,626.5
20 to 24	3.0	4.6	4.0	316.5	340.7	349.7	3,284.2	3,449.5	3,508.1
25 to 34	11.5	11.0	9.8	688.3	689.8	698.0	6,637.7	6,630.4	6,727.6
35 to 49	21.6	18.4	18.3	1,238.4	1,259.5	1,255.5	11,185.9	11,283.4	11,259.8
50 to 64	13.2	12.4	15.5	1,034.9	1,059.4	1,062.1	8,967.7	9,166.7	9,246.4
65+	9.2	8.8	13.2	899.4	930.9	946.4	7,714.2	7,904.1	8,040.8
White	56.2	50.2	59.3	4,194.1	4,259.6	4,284.2	36,335.5	36,599.9	36,817.5
Non-White	5.4	11.5	7.5	257.1	302.3	306.7	4,046.8	4,457.6	4,562.1
Both DDA & worklimiting	3.7	3.4	4.4	326.4	349.3	337.1	3,459.3	3,460.7	3,437.1
DDA only disabled	2.7	2.0	2.9	157.6	188.3	196.4	1,568.5	1,649.4	1,692.2
Work-limiting only disabled	1.8	1.8	2.0	110.9	117.2	114.8	1,027.5	1,014.2	1,025.3
Not disabled	44.6	45.7	44.3	2,957.0	2,978.0	2,995.8	26,628.7	27,043.9	27,201.4
Total	62.0	61.8	66.8	4,454.5	4,565.3	4,594.6	40,411.0	41,083.8	41,416.8

Source: Annual Population Survey Year: 2006, 2008 & 2009

Measure: Number of adult population broken down by gender, age, ethnicity and disability

[For more information click here](#)

NB: * signifies that the entry has been suppressed due to confidentiality or because of sample size and this is the case throughout the spreadsheet



Demographic characteristic proportions

Indicator	Watford			East of England			England		
	2006	2008	2009	2006	2008	2009	2006	2008	2009
Male	50.6%	49.4%	48.8%	48.7%	48.8%	49.0%	48.7%	48.8%	48.9%
Female	49.5%	50.6%	51.2%	51.3%	51.2%	51.0%	51.3%	51.2%	51.1%
16 to 19	5.6%	10.5%	9.0%	6.2%	6.2%	6.1%	6.5%	6.4%	6.3%
20 to 24	4.8%	7.4%	6.0%	7.1%	7.5%	7.6%	8.1%	8.4%	8.5%
25 to 34	18.5%	17.8%	14.7%	15.5%	15.1%	15.2%	16.4%	16.1%	16.2%
35 to 49	34.8%	29.8%	27.4%	27.8%	27.6%	27.3%	27.7%	27.5%	27.2%
50 to 64	21.3%	20.1%	23.2%	23.2%	23.2%	23.1%	22.2%	22.3%	22.3%
65+	14.8%	14.2%	19.8%	20.2%	20.4%	20.6%	19.1%	19.2%	19.4%
White	90.6%	81.2%	88.8%	94.2%	93.3%	93.2%	89.9%	89.1%	88.9%
Non-White	8.7%	18.6%	11.2%	5.8%	6.6%	6.7%	10.0%	10.9%	11.0%
Both DDA & worklimiting	6.0%	5.5%	6.6%	7.3%	7.7%	7.3%	8.6%	8.4%	8.3%
DDA only disabled	4.4%	3.2%	4.3%	3.5%	4.1%	4.3%	3.9%	4.0%	4.1%
Work-limiting only disabled	2.9%	2.9%	3.0%	2.5%	2.6%	2.5%	2.5%	2.5%	2.5%
Not disabled	71.9%	73.9%	66.3%	66.4%	65.2%	65.2%	65.9%	65.8%	65.7%
Total	100%	100%	100%	100%	100%	100%	100%	100%	100%

Source: Annual Population Survey Year: 2006, 2008 & 2009

Measure: Proportion of adult population broken down by gender, age, ethnicity and disability

Unemployment as a proportion of economically active (000s)

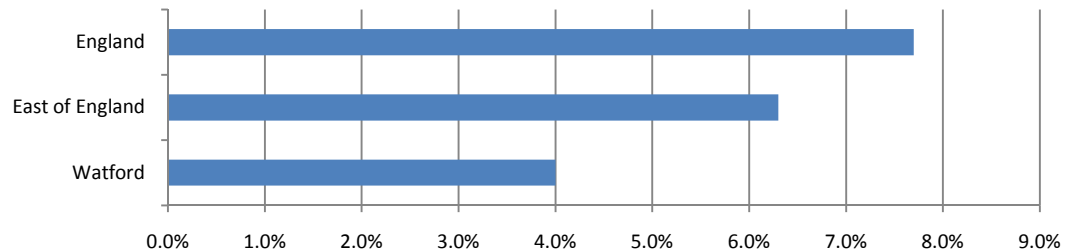
Geography	Unemployed	Economic-ally Active	Rate
Watford	1.8	44.1	4.0%
East of England	188.1	2,970.9	6.3%
England	2,029.0	26,305.2	7.7%

Source: Annual Population Survey Year: 2009

Measure: Number and proportion of adult population that are unemployed and number that are economically active.

[For more information click here](#)

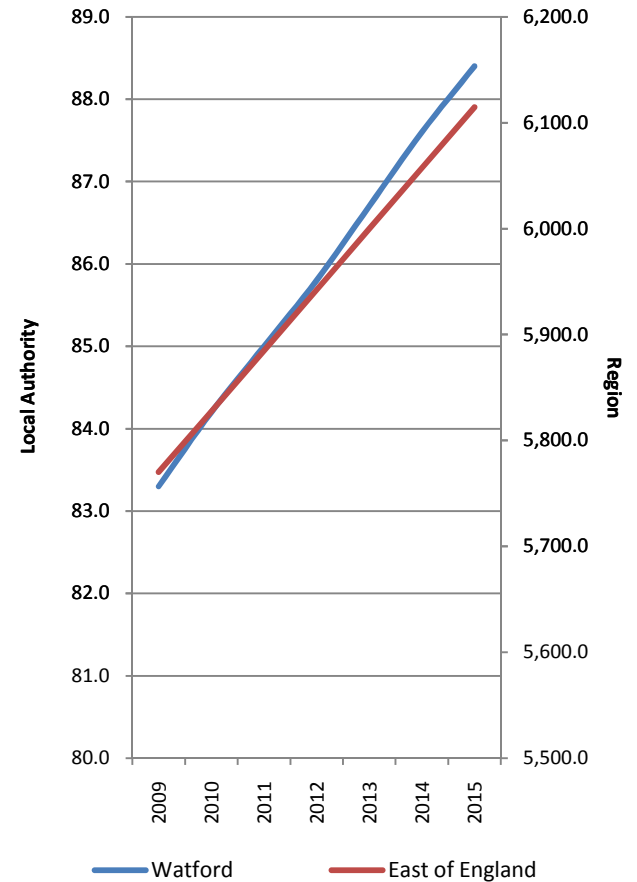
Unemployment Rate as a proportion of Economically Active Pop



Population projections by local authority area (2009-2015) (000s)

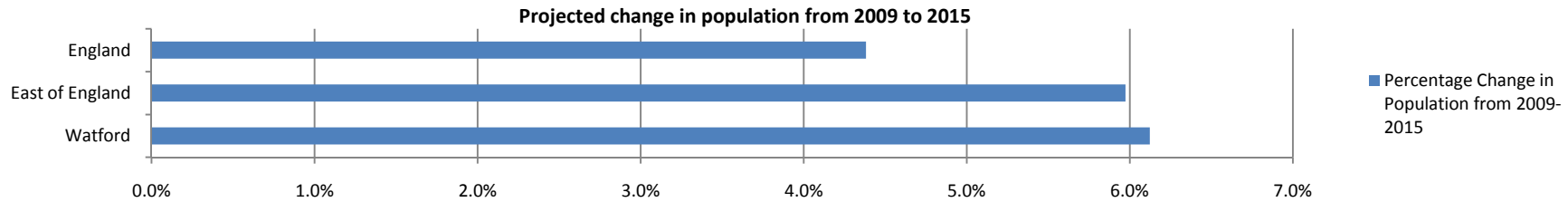
Indicator	Watford							Chg 09 - 15	% Chg
	2009	2010	2011	2012	2013	2014	2015		
Male	41.6	42.1	42.5	43	43.5	44	44.4	2.8	6.7%
Female	41.7	42.1	42.5	42.8	43.2	43.6	44	2.3	5.5%
0-4	6	6.1	6.2	6.2	6.2	6.2	6.2	0.2	3.3%
5-9	4.7	4.9	5	5.3	5.5	5.7	5.8	1.1	23.4%
10-14	4.8	4.7	4.6	4.6	4.6	4.7	4.8	0	0.0%
15-19	4.9	4.8	4.8	4.7	4.7	4.6	4.5	-0.4	-8.2%
20-24	5.3	5.3	5.3	5.3	5.3	5.2	5.2	-0.1	-1.9%
25-29	7.1	7.4	7.5	7.7	7.9	8	8	0.9	12.7%
30-34	7.2	7.2	7.2	7.3	7.4	7.6	7.8	0.6	8.3%
35-39	7	7	7	6.8	6.8	6.9	6.9	-0.1	-1.4%
40-44	6.9	6.8	6.8	6.8	6.7	6.7	6.7	-0.2	-2.9%
45-49	6.1	6.2	6.4	6.5	6.6	6.6	6.5	0.4	6.6%
50-54	4.8	5	5.2	5.4	5.6	5.7	5.8	1	20.8%
55-59	4	4.1	4.1	4.2	4.3	4.4	4.6	0.6	15.0%
60-64	3.9	3.9	3.9	3.7	3.6	3.6	3.7	-0.2	-5.1%
65-69	2.9	2.9	3	3.2	3.3	3.4	3.4	0.5	17.2%
70-74	2.5	2.6	2.5	2.5	2.5	2.6	2.6	0.1	4.0%
75-79	2.1	2.1	2.1	2.1	2.2	2.2	2.2	0.1	4.8%
80-84	1.6	1.7	1.7	1.8	1.7	1.7	1.7	0.1	6.2%
85-89	1.1	1.1	1.1	1.1	1.1	1.1	1.2	0.1	9.1%
90+	0.4	0.5	0.5	0.5	0.6	0.6	0.6	0.2	50.0%
Watford	83.3	84.2	85.0	85.8	86.7	87.6	88.4	5.1	6.1%
East of England	5,770.1	5,827.3	5,884.7	5,942.2	5,999.9	6,057.4	6,114.8	344.7	6.0%
England	51,817.1	52,196.7	52,577.1	52,953.9	53,332.0	53,710.0	54,087.8	2,270.7	4.4%

Population projections (000s) 2009 to 2015



Source: Office of National Statistics, Sub National Population Projections: 2009-2015 Measure: Projected number of population and forecasted percentage change in time period.

[For more information click here](#)



Obesity levels in adults and children (000s)

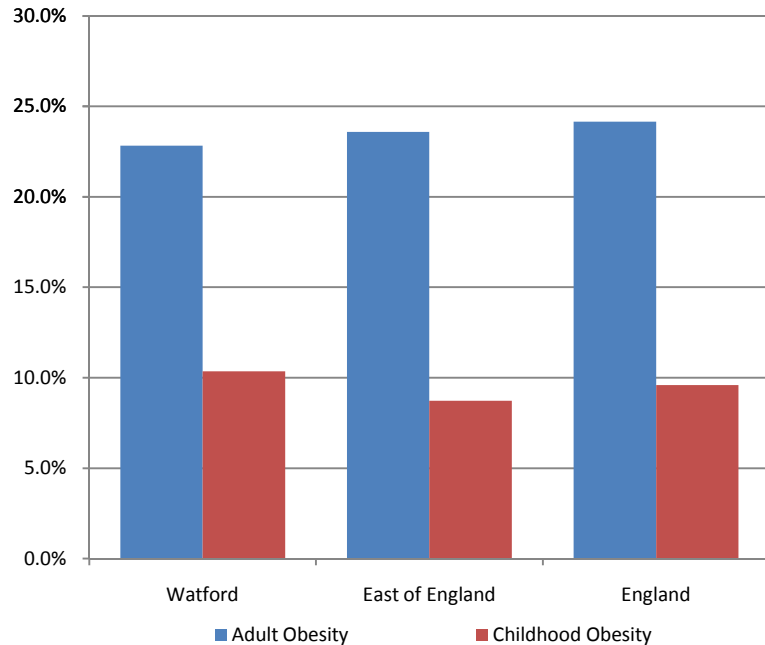
Geography	Adult Obesity		Childhood Obesity	
	Number	Rate	Number	Rate
Watford	15.2	22.8%	0.1	10.3%
East of England	1,083.4	23.6%	4.8	8.7%
England	10,005.6	24.2%	48.6	9.6%

Source: Department of Health: Year: 2006-2008 (Adults) 2008/09 (Children)

Measure: Number of people & proportion of the adult population and child population that are obese

[For more information click here](#)

Proportion of the Adult & Child population that are obese



Life expectancy by gender

Geography	Life Expectancy	
	Male	Female
Watford	77.5	81.3
East of England	78.9	82.8
England	77.9	82.0

Source: Department of Health: Year: 2006-2008: Measure: Life expectancy in years

[For more information click here](#)

Deprivation levels as measured by the Index of Multiple Deprivation (IMD)

Geography	Deprivation 2007
Score in Watford	15.81
Rank in East of England (out of 52)	19
Rank in England (out of 353)	196

Source: Department for Communities and Local Government Year: 2007

Measure: Index of multiple deprivation and rank in region and nation

[For more information click here](#)

Physical area (sq km)

Geography	Total Area in sq km	Proportion
Watford	21.4	-
East of England	19,109.3	0.1%
England	130,278.5	0.0%

Source: Office of National Statistics Year: 2007

Measure: Area measurements for local authority areas by sq km

[For more information click here](#)

Sport and Active Recreation Participation in Watford

Ni8 Sport & Active Recreation Participation by year, duration and gender

Indicator	Year	Watford			East of England			England		
		All	Male	Female	All	Male	Female	All	Male	Female
0 days / 0x30	2005/06	46.2%	40.2%	52.1%	49.0%	45.0%	52.8%	50.0%	45.1%	54.6%
	2007/09	43.2%	37.1%	49.2%	46.9%	42.1%	51.5%	47.8%	42.4%	53.0%
1-3 days	2005/06	12.0%	14.4%	9.6%	9.2%	9.8%	8.7%	8.8%	9.5%	8.1%
	2007/09	11.0%	12.7%	9.4%	9.6%	10.6%	8.6%	9.0%	9.8%	8.3%
4-7 days / 1x30	2005/06	11.4%	11.2%	11.6%	12.5%	13.2%	11.8%	12.0%	12.8%	11.3%
	2007/09	16.3%	17.1%	15.5%	13.2%	13.9%	12.6%	12.7%	13.5%	11.9%
8-11 days / 2x30	2005/06	9.4%	10.5%	8.2%	8.4%	9.1%	7.7%	8.0%	8.7%	7.3%
	2007/09	10.7%	13.1%	8.4%	8.9%	9.7%	8.2%	8.7%	9.5%	7.9%
12-19 days / 3x30	2005/06	10.7%	11.8%	9.6%	9.5%	10.6%	8.4%	9.6%	10.9%	8.4%
	2007/09	9.8%	11.3%	8.4%	10.3%	11.7%	9.0%	10.7%	12.2%	9.3%
12+ days / 3x30 - NI8	2005/06	21.1%	23.7%	18.6%	20.8%	22.8%	18.9%	21.3%	24.0%	18.7%
	2007/09	18.6%	20.0%	17.5%	21.4%	23.7%	19.2%	21.8%	24.8%	18.9%
20+ days / 5x30	2005/06	10.5%	12.0%	9.0%	11.4%	12.3%	10.5%	11.7%	13.1%	10.3%
	2007/09	8.8%	8.7%	9.0%	11.0%	12.0%	10.1%	11.1%	12.6%	9.7%

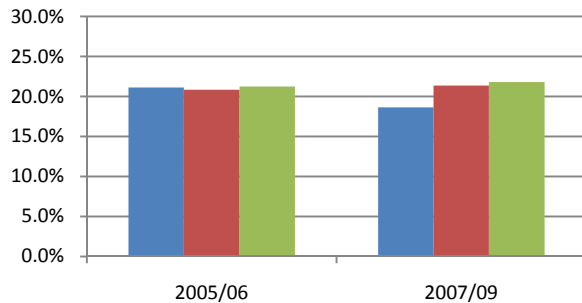
Source: Active People Survey, Year: 2005/06 (APS1), 2007/09 (APS2/3) or 2008/09 (APS3) if LA sample is boosted, Measure: NI8 participation

[For more information click here](#)

NB - The most recent data for this local authority is from the APS2/3 Dataset

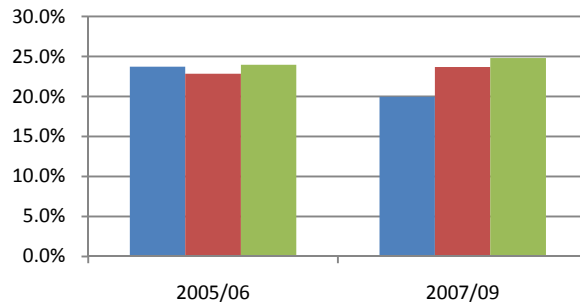
NB - NI8 Key Indicator has been highlighted (i.e. 3x30 min sessions or more of moderate intensity activity a week)

Total Participation (at least) 3x30 for APS1, 2&3



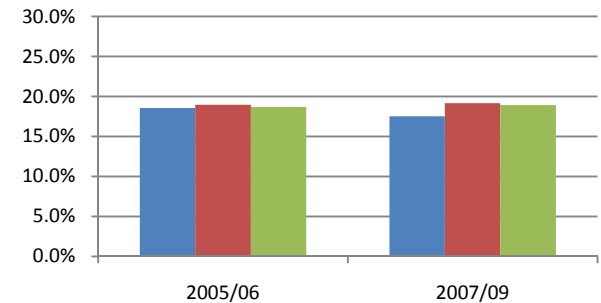
■ Watford ■ East of England ■ England

Male Participation (at least) 3x30 for APS1, 2&3



■ Watford ■ East of England ■ England

Female Participation (at least) 3x30 for APS1, 2&3



■ Watford ■ East of England ■ England

NI8 Sport & Active Recreation Participation by year, duration and ethnicity

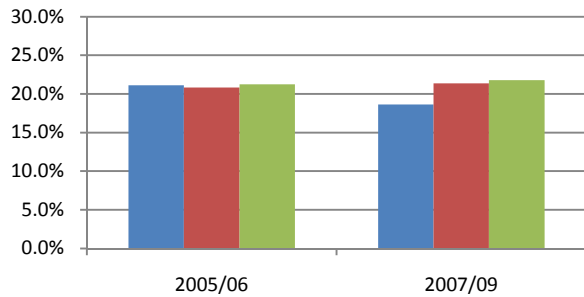
Indicator	Year	Watford			East of England			England		
		All	White	Non white	All	White	Non white	All	White	Non white
0 days / 0x30	2005/06	46.2%	45.2%	53.7%	49.0%	48.9%	50.9%	50.0%	49.6%	54.3%
	2007/09	43.2%	42.0%	48.0%	46.9%	46.7%	50.4%	47.8%	47.2%	53.1%
1-3 days	2005/06	12.0%	12.2%	*	9.2%	9.2%	9.9%	8.8%	8.8%	9.0%
	2007/09	11.0%	11.2%	*	9.6%	9.7%	9.3%	9.0%	9.0%	9.0%
4-7 days / 1x30	2005/06	11.4%	11.6%	*	12.5%	12.5%	12.7%	12.0%	12.1%	11.2%
	2007/09	16.3%	16.3%	*	13.2%	13.3%	12.0%	12.7%	12.8%	11.9%
8-11 days / 2x30	2005/06	9.4%	9.6%	*	8.4%	8.5%	7.2%	8.0%	8.1%	6.8%
	2007/09	10.7%	10.8%	*	8.9%	9.0%	8.9%	8.7%	8.8%	7.7%
12-19 days / 3x30	2005/06	10.7%	10.7%	*	9.5%	9.5%	9.0%	9.6%	9.6%	9.0%
	2007/09	9.8%	10.2%	*	10.3%	10.3%	10.5%	10.7%	10.8%	9.6%
12+ days / 3x30 - NI8	2005/06	21.1%	21.4%	*	20.8%	20.9%	19.3%	21.3%	21.5%	18.7%
	2007/09	18.6%	19.5%	*	21.4%	21.4%	19.4%	21.8%	22.2%	18.3%
20+ days / 5x30	2005/06	10.5%	10.7%	*	11.4%	11.4%	10.3%	11.7%	11.9%	9.7%
	2007/09	8.8%	9.3%	*	11.0%	11.2%	8.9%	11.1%	11.4%	8.7%

Source: Active People Survey, Year: 2005/06 (APS1), 2007/09 (APS2/3) or 2008/09 (APS3) if LA sample is boosted, Measure: NI8 participation

[For more information click here](#)

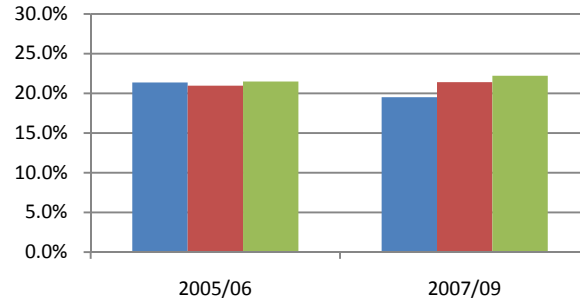
NB - The most recent data for this local authority is from the APS2/3 Dataset

Total Participation (at least) 3x30 for APS1, 2&3



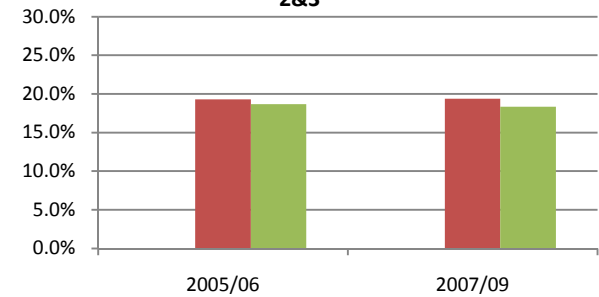
■ Watford ■ East of England ■ England

White Participation (at least) 3x30 for APS1, 2&3



■ Watford ■ East of England ■ England

Non-White Participation (at least) 3x30 for APS1, 2&3



■ Watford ■ East of England ■ England

NI8 Sport & Active Recreation Participation by year, duration and disability

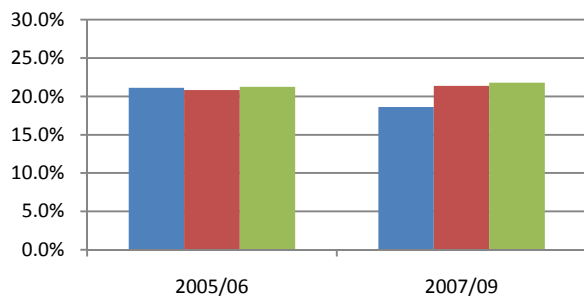
Indicator	Year	Watford			East of England			England		
		All	Limiting disability	No limiting disability	All	Limiting disability	No limiting disability	All	Limiting disability	No limiting disability
0 days / 0x30	2005/06	46.2%	70.3%	42.3%	49.0%	74.2%	44.7%	50.0%	75.7%	45.1%
	2007/09	43.2%	76.2%	39.3%	46.9%	71.6%	42.7%	47.8%	73.6%	43.1%
1-3 days	2005/06	12.0%	*	12.6%	9.2%	5.8%	9.8%	8.8%	5.4%	9.4%
	2007/09	11.0%	*	11.5%	9.6%	6.4%	10.1%	9.0%	5.8%	9.6%
4-7 days / 1x30	2005/06	11.4%	*	12.3%	12.5%	6.6%	13.5%	12.0%	6.2%	13.1%
	2007/09	16.3%	*	17.3%	13.2%	7.8%	14.1%	12.7%	7.0%	13.7%
8-11 days / 2x30	2005/06	9.4%	*	9.7%	8.4%	3.9%	9.2%	8.0%	3.7%	8.7%
	2007/09	10.7%	*	11.3%	8.9%	4.8%	9.6%	8.7%	4.4%	9.5%
12-19 days / 3x30	2005/06	10.7%	*	11.6%	9.5%	4.2%	10.4%	9.6%	3.9%	10.6%
	2007/09	9.8%	*	10.9%	10.3%	4.3%	11.3%	10.7%	4.4%	11.8%
12+ days / 3x30 - NI8	2005/06	21.1%	*	23.1%	20.8%	9.4%	22.8%	21.3%	9.0%	23.6%
	2007/09	18.6%	*	20.5%	21.4%	9.4%	23.4%	21.8%	9.2%	24.1%
20+ days / 5x30	2005/06	10.5%	*	11.6%	11.4%	5.3%	12.4%	11.7%	5.1%	12.9%
	2007/09	8.8%	*	9.6%	11.0%	5.0%	12.1%	11.1%	4.8%	12.3%

Source: Active People Survey, Year: 2005/06 (APS1), 2007/09 (APS2/3) or 2008/09 (APS3) if LA sample is boosted, Measure: NI8 participation

[For more information click here](#)

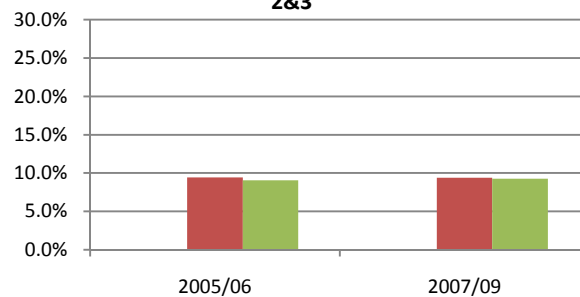
NB - The most recent data for this local authority is from the APS2/3 Dataset

Total Participation (at least) 3x30 for APS1, 2&3



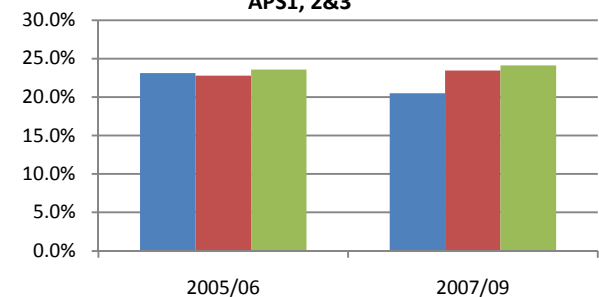
■ Watford ■ East of England ■ England

Disabled Participation (at least) 3x30 for APS1, 2&3



■ Watford ■ East of England ■ England

Non-Disabled Participation (at least) 3x30 for APS1, 2&3



■ Watford ■ East of England ■ England

NI8 Sport & Active Recreation Participation by year, duration, age band and socio-economic class

Indicator	Year	Watford											
		All	16-19	20-24	25-29	30-34	35-44	45-64	65+	NS SEC 1-2	NS SEC 3	NS SEC 4	NS SEC 5-8
0 days / 0x30	2005/06	46.2%	*	*	38.5%	28.2%	35.8%	56.1%	73.1%	38.8%	53.1%	40.8%	55.8%
	2007/09	43.2%	*	*	*	*	43.2%	46.7%	72.5%	38.9%	44.0%	44.3%	54.2%
1-3 days	2005/06	12.0%	*	*	*	*	16.5%	12.2%	*	15.2%	*	*	10.9%
	2007/09	11.0%	*	*	*	*	*	10.2%	*	10.9%	*	*	*
4-7 days / 1x30	2005/06	11.4%	*	*	*	*	*	11.5%	*	13.4%	*	*	*
	2007/09	16.3%	*	*	*	26.7%	16.9%	15.7%	*	20.2%	*	*	11.9%
8-11 days / 2x30	2005/06	9.4%	*	*	*	*	*	*	*	8.1%	*	*	9.7%
	2007/09	10.7%	*	*	*	*	*	*	*	11.8%	*	*	*
12-20 days / 3x30	2005/06	10.7%	*	*	*	*	15.1%	*	*	13.9%	*	*	*
	2007/09	9.8%	*	*	*	*	*	9.0%	*	10.4%	*	*	*
12+ days / 3x30 - NI8	2005/06	21.1%	*	*	*	30.0%	29.2%	14.5%	*	24.4%	*	*	15.2%
	2007/09	18.6%	*	*	*	*	16.4%	19.0%	*	18.2%	*	*	18.2%
20+ days / 5x30	2005/06	10.5%	*	*	*	*	14.2%	*	*	10.5%	*	*	*
	2007/09	8.8%	*	*	*	*	*	9.9%	*	7.8%	*	*	*

Source: Active People Survey, Year: 2005/06 (APS1), 2007/09 (APS2/3) or 2008/09 (APS3) if LA sample is boosted, Measure: NI8 participation

[For more information click here](#)

NB - The most recent data for this local authority is from the APS2/3 Dataset

Expected participation in 3x30 (or more) sessions a week

Expected Participation	Watford		East of England		England	
	2005/06	2007/09	2005/06	2007/09	2005/06	2007/09
Expected	22.6%	23.5%	21.4%	21.8%	21.9%	22.5%
Observed	21.1%	18.6%	20.8%	21.4%	21.3%	21.8%
Difference	-1.5%	-4.9%	-0.6%	-0.4%	-0.6%	-0.7%

Source: Mindshare, Year 2005/06-2007/9, Measure: 3x30 minute sport sessions a week (NI8)

[For more information click here](#)

NB: 2007/09 refers to the combined APS2-APS3 sample

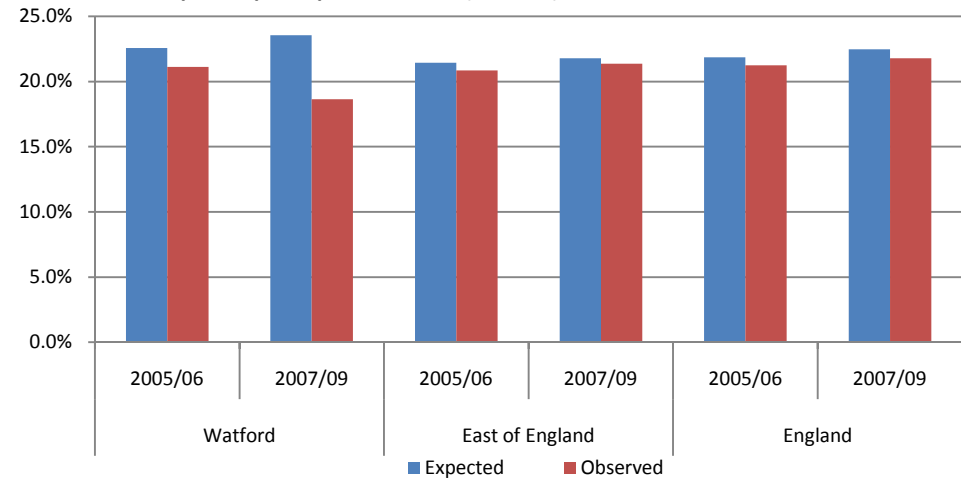
Health costs of sporting inactivity

Geography	The Health Costs of Sporting Inactivity	
	Cost	Cost per 100,000 pop
Watford	£464,589	£763,499
East of England	£69,797,670	£1,590,286
England	£764,661,980	£1,898,293

Source: Department of Health - Be Active Be Healthy, Year: 2006/7, Measure: Cost of sporting inactivity

[For more information click here](#)

Expected participation in 3x30 (or more) sessions a week



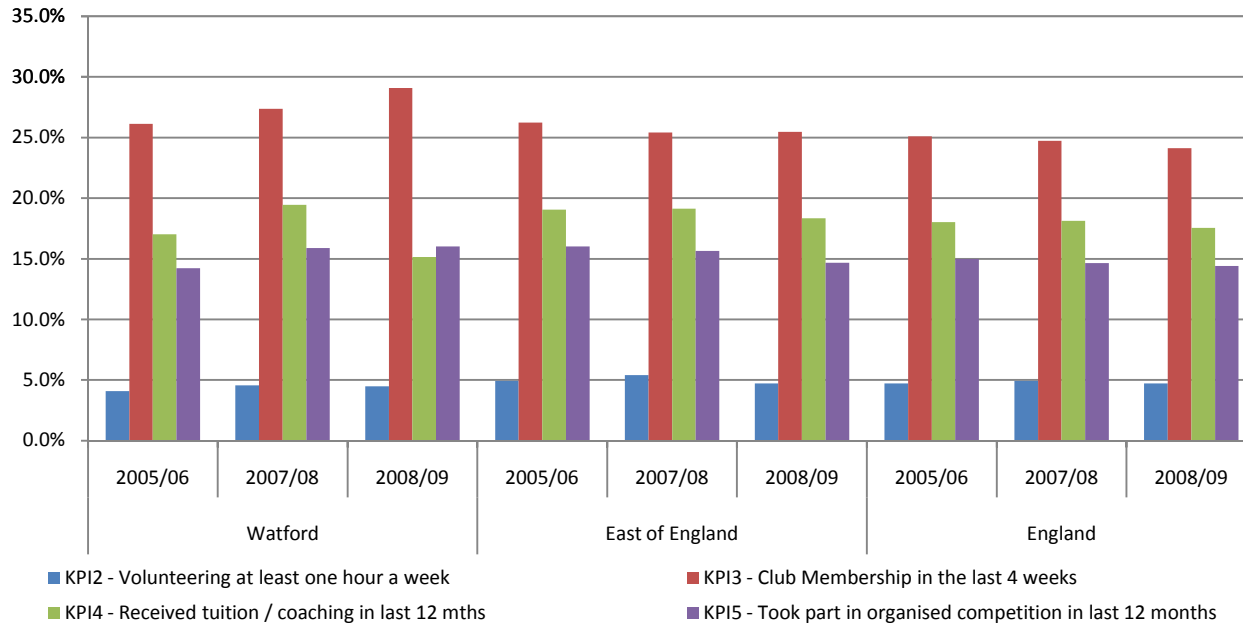
Key Performance Indicators (KPI)

Indicator	Watford			East of England			England		
	2005/06	2007/08	2008/09	2005/06	2007/08	2008/09	2005/06	2007/08	2008/09
KPI2 - Volunteering at least one hour a week	4.1%	4.6%	4.5%	4.9%	5.4%	4.7%	4.7%	4.9%	4.7%
KPI3 - Club Membership in the last 4 weeks	26.1%	27.4%	29.1%	26.2%	25.4%	25.5%	25.1%	24.7%	24.1%
KPI4 - Received tuition / coaching in last 12 mths	17.0%	19.5%	15.1%	19.0%	19.1%	18.3%	18.0%	18.1%	17.5%
KPI5 - Took part in organised competition in last 12 months	14.2%	15.9%	16.0%	16.0%	15.7%	14.7%	15.0%	14.6%	14.4%
KPI6 - Satisfaction with local provision	70.6%	66.0%	79.0%	71.0%	68.2%	69.7%	69.5%	66.6%	68.4%

Source: Active People Survey , Year: 2005/06-2008/09, Measure: Key Performance Indicators 2, 3, 4, 5, 6

[For more information click here](#)

Understanding key performance indicators - KPI2, KPI3, KPI4 and KPI5



KPI6 - Satisfaction with local provision



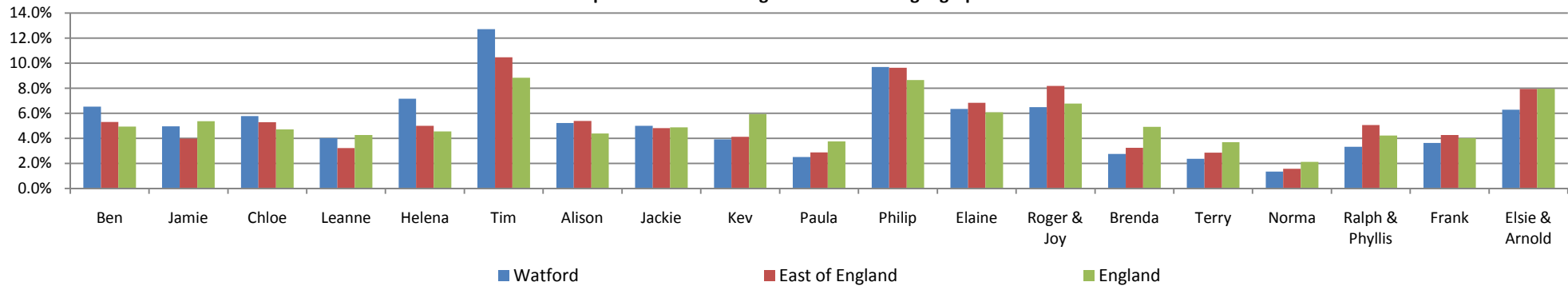
Market segmentation

Code	Name	Description	Watford		East of England		England	
			Number	Rate	Number	Rate	Number	Rate
A01	Ben	Competitive Male Urbanites	4.1	6.5%	236.4	5.3%	1,989.1	4.9%
A02	Jamie	Sports Team Drinkers	3.1	5.0%	177.6	4.0%	2,162.9	5.4%
A03	Chloe	Fitness Class Friends	3.6	5.8%	236.0	5.3%	1,896.5	4.7%
A04	Leanne	Supportive Singles	2.5	4.0%	143.5	3.2%	1,711.6	4.3%
B05	Helena	Career Focused Females	4.5	7.2%	222.6	5.0%	1,829.8	4.5%
B06	Tim	Settling Down Males	7.9	12.7%	467.1	10.5%	3,554.0	8.8%
B07	Alison	Stay at Home Mums	3.3	5.2%	240.1	5.4%	1,766.4	4.4%
B08	Jackie	Middle England Mums	3.1	5.0%	215.0	4.8%	1,965.0	4.9%
B09	Kev	Pub League Team Mates	2.4	3.9%	183.4	4.1%	2,386.6	5.9%
B10	Paula	Stretched Single Mums	1.6	2.5%	128.0	2.9%	1,507.3	3.7%
C11	Philip	Comfortable Mid-Life Males	6.1	9.7%	429.2	9.6%	3,480.0	8.6%
C12	Elaine	Empty Nest Career Ladies	4.0	6.3%	304.8	6.8%	2,443.9	6.1%
C13	Roger & Joy	Early Retirement Couples	4.1	6.5%	365.2	8.2%	2,723.7	6.8%
C14	Brenda	Older Working Women	1.7	2.7%	144.8	3.2%	1,976.8	4.9%
C15	Terry	Local 'Old Boys'	1.5	2.4%	127.4	2.9%	1,484.5	3.7%
C16	Norma	Later Life Ladies	0.8	1.3%	70.3	1.6%	855.0	2.1%
D17	Ralph & Phyllis	Comfortable Retired Couple	2.1	3.3%	225.4	5.1%	1,700.2	4.2%
D18	Frank	Twilight Year Gents	2.3	3.6%	189.8	4.3%	1,612.9	4.0%
D19	Elsie & Arnold	Retirement Home Singles	3.9	6.3%	354.3	7.9%	3,206.3	8.0%
Total			62.5	100.0%	4,460.9	100.0%	40,252.4	100.0%

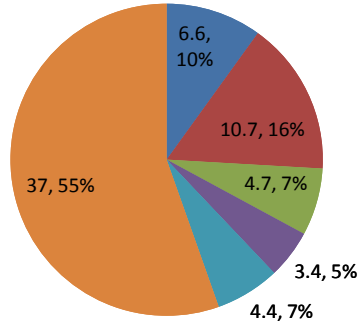
Source: Sport England and Experian Ltd, Year: 2010, Measure: Sport Market Segmentation

[For more information click here](#)

Comparison of Market Segmentation across geographies



Watford - Top 5 Sports



■ Swimming ■ Cycling ■ Gym ■ Athletics ■ Football ■ Remaining

Top 5 sports in local authority with regional and national comparison

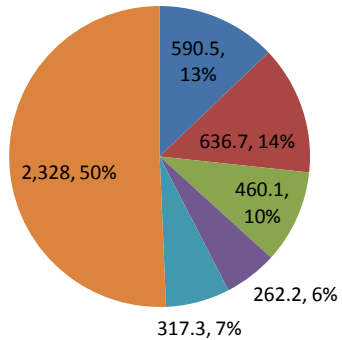
Sport	Watford		East of England		England	
	Number	Rate	Number	Rate	Number	Rate
Swimming	6.6	9.9%	590.5	12.9%	5,352.0	12.9%
Cycling	10.7	16.0%	636.7	13.9%	4,983.3	12.0%
Gym	4.7	7.0%	460.1	10.0%	4,380.8	10.6%
Athletics	3.4	5.1%	262.2	5.7%	2,589.5	6.3%
Football	4.4	6.7%	317.3	6.9%	3,016.2	7.3%

Source: Active People Survey3, Population data ONS Annual Population Survey 2008

Measure: Participation rate of the top 5 sports and the number of people that participate at least once per month

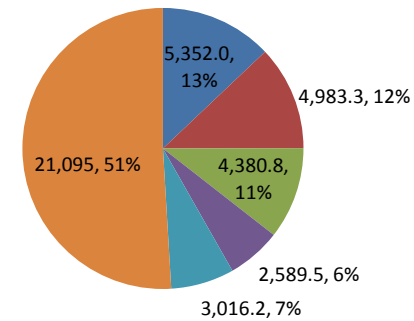
[For more information click here](#)

East of England - Top 5 Sports



■ Swimming ■ Cycling ■ Gym ■ Athletics ■ Football ■ Remaining

England - Top 5 Sports



■ Swimming ■ Cycling ■ Gym ■ Athletics ■ Football ■ Remaining

Sporting Facilities within Watford

Number of facilities by type

Facilities	Watford Number	East of England	
		Number	Proportion of Region
Athletics Tracks	1	33	3.0%
Golf	2	429	0.5%
Grass Pitches	47	5,200	0.9%
Health & Fitness Suite	10	690	1.4%
Ice Rinks	0	3	0.0%
Indoor Bowls	2	73	2.7%
Indoor Tennis Centre	0	51	0.0%
Ski Slopes	0	25	0.0%
Sports Hall	14	1,166	1.2%
Swimming Pool	6	634	0.9%
Artificial Grass Pitch	4	197	2.0%
Total	86	8,501	1.0%

Source: Active Places Power, Year: Jan 2010

Measure: Number of sporting facilities

[For more information click here](#)

Population of Watford as a proportion of East of England population	1.5%
---	------

Access types of sporting facilities by local authority area

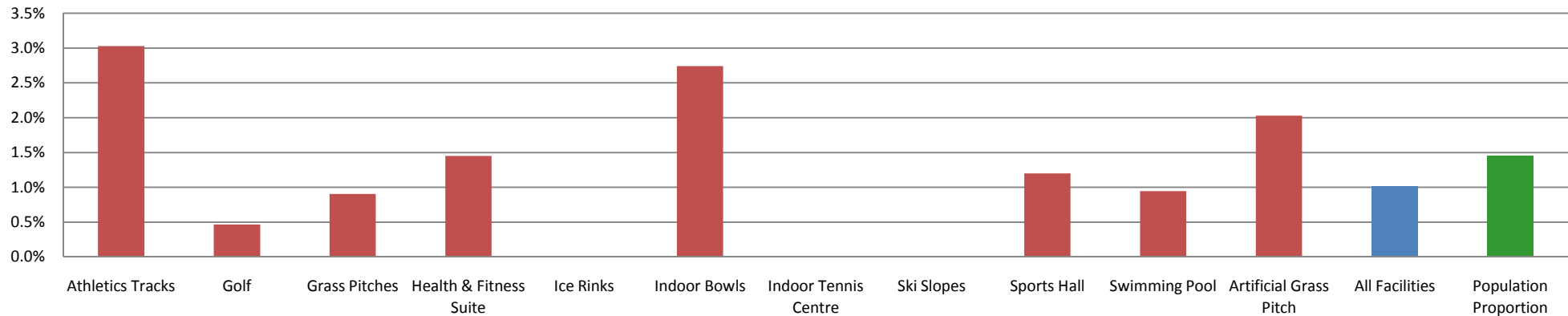
Facilities	Count	Number		Percentage	
		Public	Private	Public	Private
Athletics Tracks	1	1	0	100%	0%
Golf	2	2	0	100%	0%
Grass Pitches	47	45	2	96%	4%
Health and Fitness Suite	10	8	2	80%	20%
Ice Rinks	0	0	0	-	-
Indoor Bowls	2	2	0	100%	0%
Indoor Tennis Centre	0	0	0	-	-
Ski Slopes	0	0	0	-	-
Sports Hall	14	12	2	86%	14%
Swimming Pool	6	6	0	100%	0%
Artificial Grass Pitch	4	4	0	100%	0%
Total	86	80	6	93%	7%
East of England	8,501	7,334	1,167	86%	14%
England	65,124	52,907	12,217	81%	19%

Source: Active Places Power: Year: Jan 2010

Measure: Number & proportion of sporting facilities that are for private use or public access

[For more information click here](#)

Proportion of Region



LocalSportProfileTool

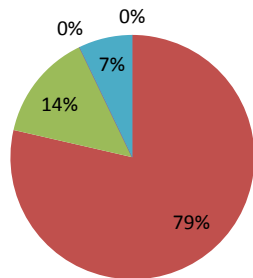
Ownership types of sporting facilities by local authority area

Facilities	Count	Ownership Type					Ownership Type				
		Commercial	Education	ocal Authority	Not Known	Others	Commercial	Education	ocal Authority	Not Known	Others
Athletics Tracks	1	0	0	1	0	0	0%	0%	100%	0%	0%
Golf	2	1	0	1	0	0	50%	0%	50%	0%	0%
Grass Pitches	47	2	20	20	0	5	4%	43%	43%	0%	11%
Health and Fitness Suite	10	3	4	2	0	1	30%	40%	20%	0%	10%
Ice Rinks	0	0	0	0	0	0	-	-	-	-	-
Indoor Bowls	2	0	0	1	0	1	0%	0%	50%	0%	50%
Indoor Tennis Centre	0	0	0	0	0	0	-	-	-	-	-
Ski Slopes	0	0	0	0	0	0	-	-	-	-	-
Sports Hall	14	0	11	2	0	1	0%	79%	14%	0%	7%
Swimming Pool	6	0	2	4	0	0	0%	33%	67%	0%	0%
Artificial Grass Pitch	4	0	3	1	0	0	0%	75%	25%	0%	0%
Total	86	6	40	32	0	8	7%	47%	37%	0%	9%
East of England	8,501	1,113	4,007	2,265	7	1,109	13%	47%	27%	0%	13%
England	65,124	8,385	30,588	16,968	54	9,129	13%	47%	26%	0%	14%

Source: Active Places Power: Year: Jan 2010: Measure: Number of sporting facilities by type of owner

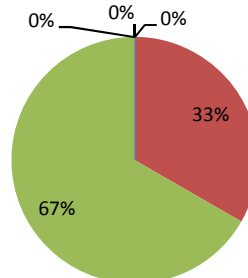
[For more information click here](#)

Sports Hall



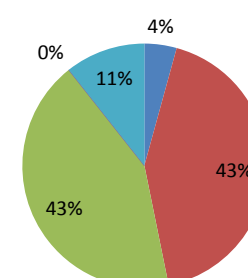
Commercial Education Local Authority Not Known Others

Swimming Pool



Commercial Education Local Authority Not Known Others

Grass Pitches



Commercial Education Local Authority Not Known Others

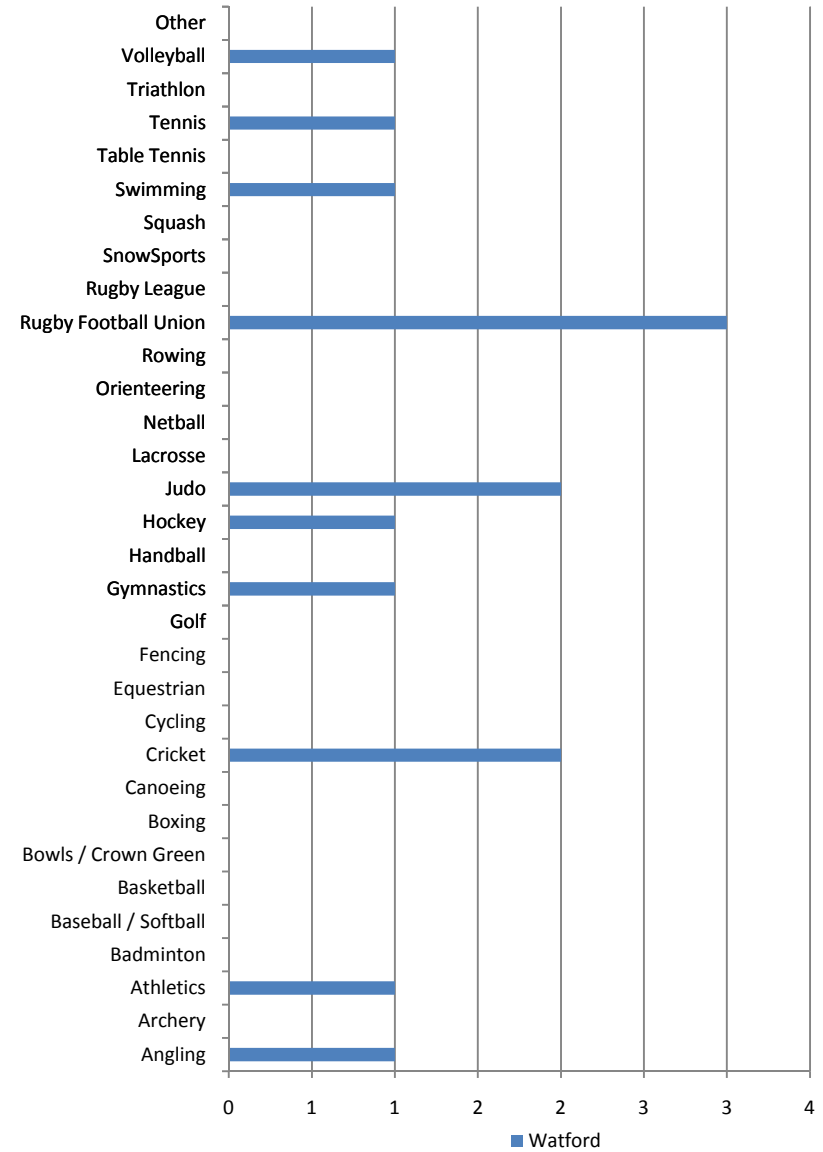
Number of clubmark clubs by sporting activity type

[For more information click here](#)

Clubmark Type	Watford Number	East of England Number	England Number
Angling	1	13	80
Archery	0	7	60
Athletics	1	42	353
Badminton	0	45	300
Baseball / Softball	0	0	4
Basketball	0	10	144
Bowls / Crown Green	0	3	18
Boxing	0	5	50
Canoeing	0	13	151
Cricket	2	294	2,464
Cycling	0	29	222
Equestrian	0	15	87
Fencing	0	6	66
Golf	0	142	999
Gymnastics	1	63	614
Handball	0	0	7
Hockey	1	62	465
Judo	2	43	351
Lacrosse	0	3	35
Netball	0	69	455
Orienteering	0	6	47
Rowing	0	9	127
Rugby Football Union	3	92	865
Rugby League	0	4	257
SnowSports	0	4	24
Squash	0	24	251
Swimming	1	77	820
Table Tennis	0	21	238
Tennis	1	130	1,022
Triathlon	0	10	72
Volleyball	1	6	86
Other	0	35	183
Total	14	1,282	10,917

Source: Clubmark: Year: 2010 Measure: Number of clubmark clubs by sporting activity type by local authority area

Number of clubmark clubs in the local authority



Comparisons with nearest neighbours of Watford

Population compared with nearest neighbours (000s)

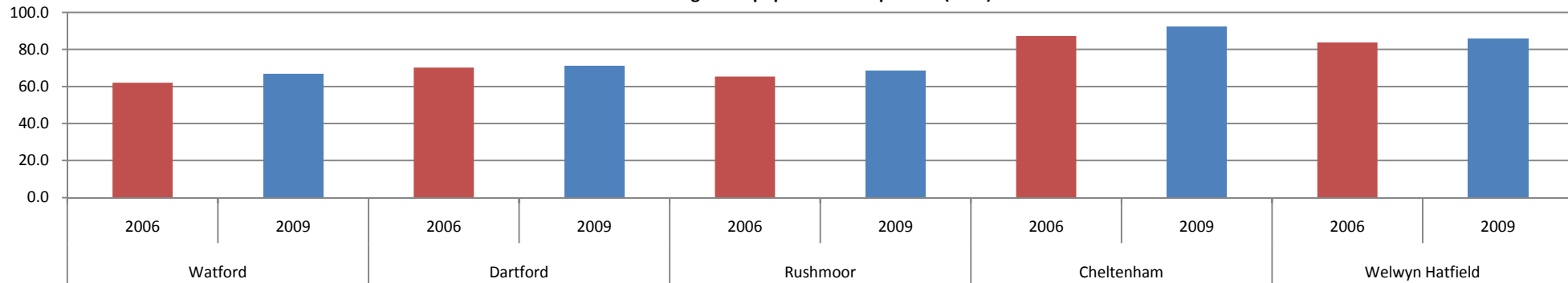
Indicator	Watford		Dartford		Rushmoor		Cheltenham		Welwyn Hatfield	
	2006	2009	2006	2009	2006	2009	2006	2009	2006	2009
Male	31.4	32.6	33.5	35.5	32.7	34.2	42.9	44.8	40.5	42.0
Female	30.7	34.2	36.7	35.7	32.7	34.4	44.4	47.5	43.3	43.8
16 to 19	3.5	6.0	6.4	4.4	4.8	4.3	7.8	5.5	4.4	4.0
20 to 24	3.0	4.0	5.7	4.5	6.4	4.4	5.8	9.6	6.9	6.0
25 to 34	11.5	9.8	11.2	11.7	17.6	13.9	14.8	18.0	11.8	18.2
35 to 49	21.6	18.3	20.1	24.4	17.0	22.6	24.3	20.8	27.6	24.6
50 to 64	13.2	15.5	15.6	15.2	11.9	13.6	19.5	17.2	16.6	18.3
65+	9.2	13.2	11.3	11.0	7.7	9.9	15.1	21.2	16.6	14.7
White	56.2	59.3	65.5	57.4	59.4	60.1	82.7	88.3	71.1	79.8
Non-White	5.4	7.5	4.7	13.8	6.0	8.5	4.6	4.0	12.2	6.0
DDA & also w	3.7	4.4	4.2	4.8	3.3	7.1	5.7	4.0	6.3	5.7
DDA only disa	2.7	2.9	4.9	4.4	3.3	3.8	4.6	3.4	2.4	4.6
Work-limiting	1.8	2.0	1.7	*	1.2	1.5	1.7	2.9	*	3.3
Not disabled	44.6	44.3	48.2	50.5	50.0	46.3	60.1	60.8	58.5	57.6
Total	62.0	66.8	70.2	71.2	65.4	68.6	87.3	92.3	83.8	85.8

Source: Annual Population Survey, Year: 2006-09, Measure: Adult population (16+)

[For more information on nearest neighbour selection click here](#)

[For more information on population statistics click here](#)

Nearest neighbour population comparison (000s)



Comparisons with nearest neighbours of Watford

Total area in sq km

Geography	Total Area in sq km	Proportion of England
Watford	21.4	0.0%
Dartford	72.8	0.1%
Rushmoor	39.0	0.0%
Cheltenham	46.6	0.0%
Welwyn Hatfield	129.6	0.1%

England	130,278.5
---------	-----------

Source: Office of National Statistics Year: 2007

Measure: Area measurements for local authority areas by sq km

[For more information click here](#)

Deprivation levels by local authority as measured by the Index of Multiple Deprivation (IMD)

Geography	IMD Score 2007	Rank (out of 353)
Watford	15.81	196
Dartford	16.65	180
Rushmoor	11.62	267
Cheltenham	15.92	195
Welwyn Hatfield	14.18	227

Source: Department for Communities and Local Government

Year: 2007 Measure: Index of multiple deprivation and rank in region and nation

[For more information click here](#)

Obesity levels in adults and children by local authority area

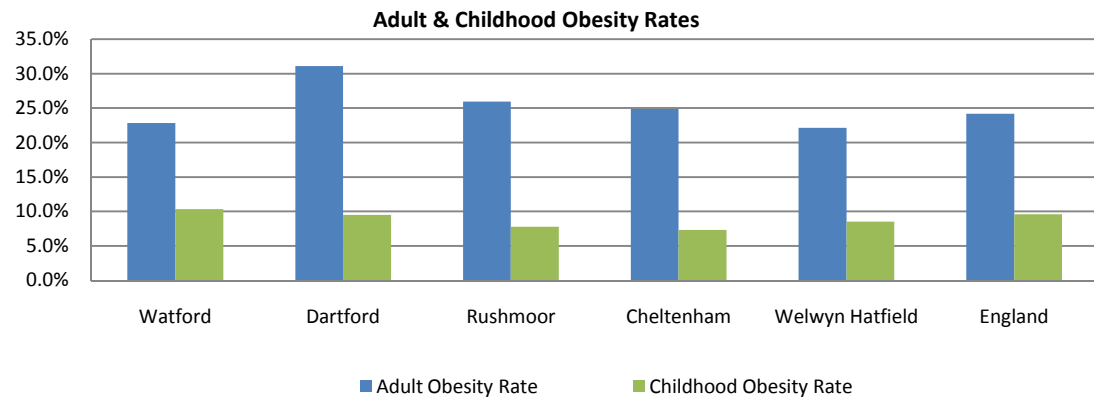
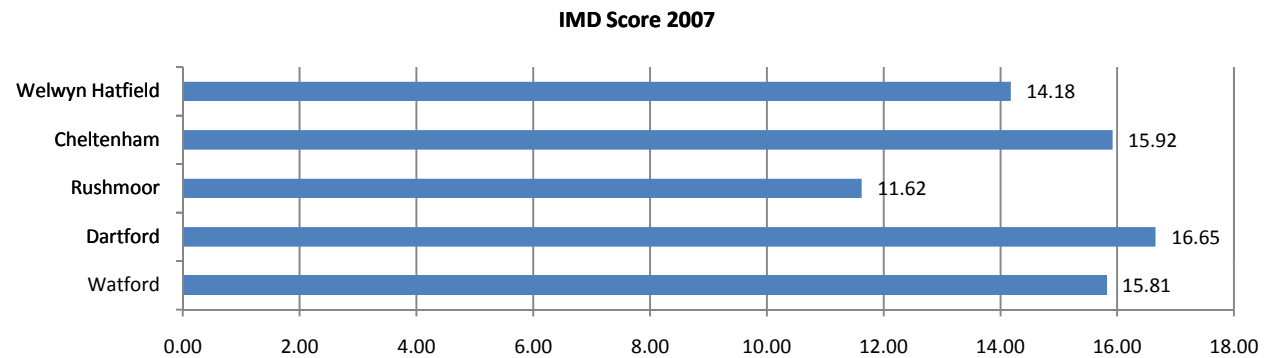
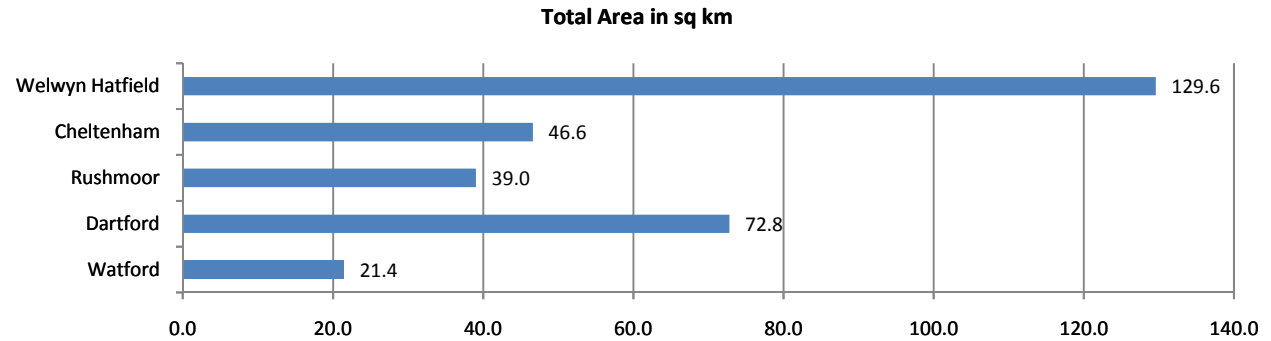
Geography	Adult Obesity Rate	Childhood Obesity Rate
Watford	22.8%	10.3%
Dartford	31.1%	9.5%
Rushmoor	25.9%	7.8%
Cheltenham	24.9%	7.3%
Welwyn Hatfield	22.2%	8.5%

England	24.2%	9.6%
---------	-------	------

Source: Department of Health, Year: 2006-2008,

Measure: Proportion of the adult and child population that are obese

[For more information click here](#)



Comparisons with nearest neighbours of Watford

NI8 Sport and Active Recreation Participation at least 3x30 per week compared to nearest neighbours

Indicator	Watford		Dartford		Rushmoor		Cheltenham		Welwyn Hatfield	
	2005/06	2007/09	2005/06	2007/09	2005/06	2007/09	2005/06	2007/09	2005/06	2007/09
Male	23.7%	20.0%	18.4%	21.4%	28.3%	25.4%	25.7%	27.5%	21.4%	24.0%
Female	18.6%	17.5%	17.1%	17.9%	19.0%	19.4%	19.8%	21.8%	16.7%	22.3%
16 to 19	*	*	*	*	*	*	*	*	*	49.4%
20 to 24	*	*	*	*	*	*	*	*	*	*
25 to 29	*	*	*	*	36.1%	*	*	43.6%	*	*
30 to 34	30.0%	*	*	*	30.4%	30.3%	*	36.8%	*	*
35 to 44	29.2%	16.4%	16.3%	26.4%	25.8%	30.0%	25.9%	32.2%	15.1%	28.3%
45 to 64	14.5%	19.0%	15.5%	18.3%	22.9%	17.9%	20.0%	19.6%	17.6%	21.5%
65+	*	*	*	*	*	*	*	*	*	*
White	21.4%	19.5%	17.7%	20.5%	23.7%	22.6%	22.6%	24.4%	19.0%	22.8%
Non-White	*	*	*	*	*	*	*	*	*	*
Limiting disab	*	*	*	*	*	*	*	*	*	*
No limiting dis	23.1%	20.5%	18.5%	21.3%	25.2%	24.0%	24.8%	26.4%	21.0%	24.9%
NS-SEC 1-2	24.4%	18.2%	20.7%	23.1%	28.1%	25.6%	28.0%	29.0%	21.7%	25.9%
NS-SEC 3	*	*	*	*	24.2%	22.8%	*	*	*	*
NS-SEC 4	*	*	*	*	*	*	*	*	*	*
NS-SEC 5-8	15.2%	18.2%	14.8%	17.7%	20.2%	18.6%	17.3%	17.3%	12.6%	17.9%
Total	21.1%	18.6%	17.7%	19.6%	23.5%	22.3%	22.6%	24.6%	19.0%	23.1%

Source: Active People Survey, Year: 2006 (APS1) & 2009 (APS3), Measure: Participation in 3x30 minute sessions

[For more information click here](#)

NI8 Expected Sport and Active Recreation Participation at least 3x30 per weel compared to nearest neighbours

Expected Participation	Watford		Dartford		Rushmoor		Cheltenham		Welwyn Hatfield	
	2005/06	2007/09	2005/06	2007/09	2005/06	2007/09	2005/06	2007/09	2005/06	2007/09
Expected	22.6%	23.5%	21.7%	21.5%	24.2%	23.2%	25.5%	25.9%	21.5%	23.5%
Observed	21.1%	18.6%	17.7%	19.6%	23.5%	22.3%	22.6%	24.6%	19.0%	23.1%
Difference	-1.5%	-4.9%	-4.0%	-1.9%	-0.7%	-0.9%	-2.9%	-1.3%	-2.5%	-0.4%

Source: Mindshare, Year 2006-2007/9, Measure: 3x30 minute sport sessions a week (NI8)

NB: 2007/09 refers to the combined APS2 and APS3 sample

[For more information click here](#)

Comparisons with nearest neighbours of Watford

Number of facilities compared with nearest neighbours

Facilities	Watford Number	Dartford Number	Rushmoor Number	Cheltenham Number	Welwyn Hatfield Number
Athletics Tracks	1	1	2	1	1
Golf	2	5	2	1	11
Grass Pitches	47	65	57	84	69
Health & Fitness Suite	10	14	13	20	9
Ice Rinks	0	0	0	0	0
Indoor Bowls	2	1	1	0	1
Indoor Tennis Centre	0	1	1	0	7
Ski Slopes	0	0	3	0	2
Sports Hall	14	17	15	23	23
Swimming Pool	6	10	11	14	10
Artificial Grass Pitch	4	3	4	12	5
Total	86	117	109	155	138
Population (000s)	66.8	71.2	68.6	92.3	85.8

Source: Active Places Power, Population Data: ONS Annual Population Survey 2009, Year: Jan 2010, Measure: Number of sporting facilities

[For more information click here](#)

Number of facilities compared with nearest neighbours

